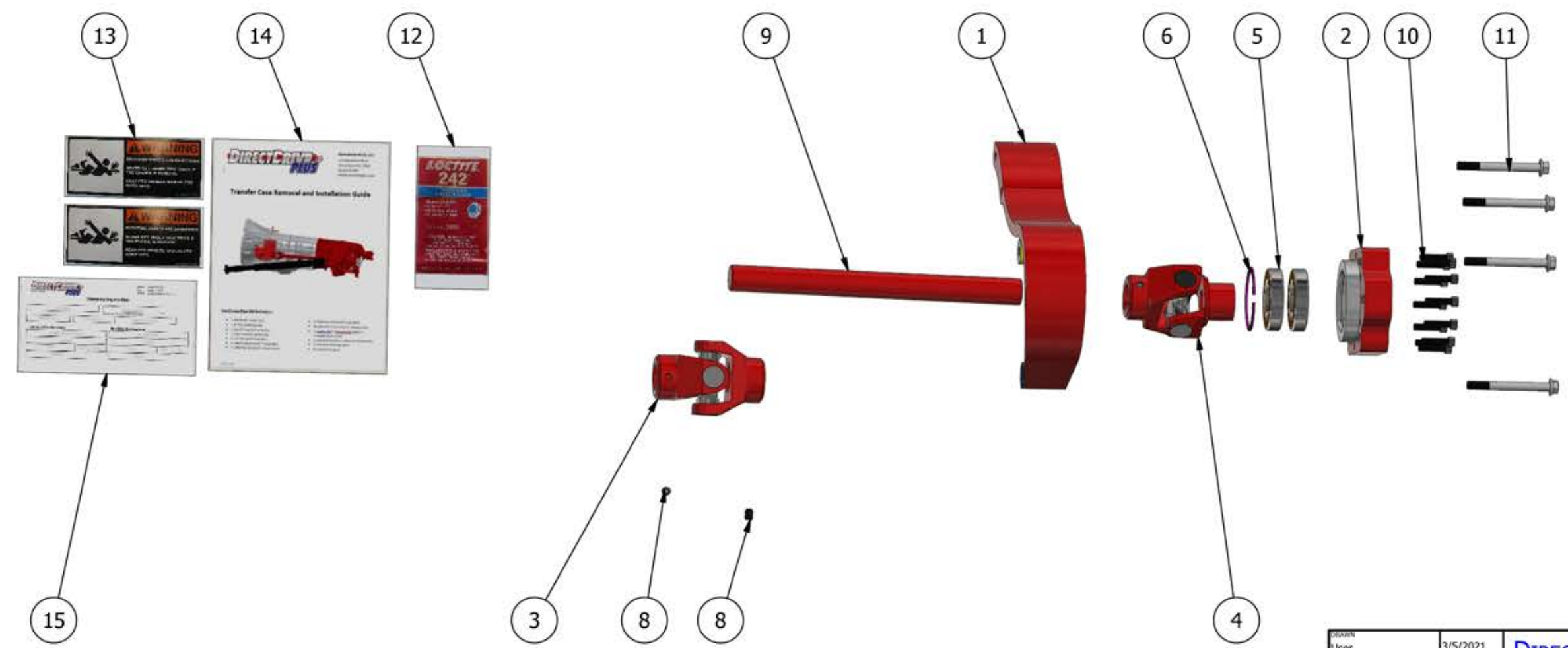


PARTS LIST			
ITEM	QTY	PART NUMBER	DESCRIPTION
1	1	DDP-7506	Bracket 4X2 Shaft Extension
2	1	DDP-7045	Flange LiveDrive SAE B 2-4 Bolt
3	3	SPI-131-ASSY	1310 U-Joint Assy
4	1	DDP-7069	Yoke Pump Side Splined 7/8" 13 Modified SAE B Mount
5	2	DDP-6009-2NSE9	Bearing Sealed 75mm X 45mm X 16mm
6	1	MBC-VHO-300ST	VHO-300ST Snap Ring Bearing Retainer SAE B Flange
7	1	SSS-118049	#1010 Carbon Woodruff Key
8	3	MCM-93445A613	18-8 SS KNURL-GRIP CUP POINT SET SCREW
9	1	DDP-7508	Shaft 20A SAE Mount 1.250" X 13.980" Woodruff Key
10	12	AIM-9040516114	5/16 X 1.250 NC Socket Head
11	4	Flange Head 10mm X 1.5 X 95	Flange Head 10mm X 1.5 X 95

PARTS LIST			
ITEM	QTY	PART NUMBER	DESCRIPTION
12	1	LOC-24025	Loctite 242 Treadlocker Blue
13	2	MAR-2200	Rotating Shaft Warning
14	1	LDP-2017 Install Manual	Installation Manual 2017 + Ford
15	1	LDP-2017 Warranty Card	Warranty Registration Card

Application  
2012 + Ford Super Duty Cab and Chassis  
4X2



FIRE DEPARTMENT APPROVAL	DATE

REV	DATE	BY	DESCRIPTION

DRAWN	User	3/5/2021	<b>DIRECTDRIVE PLUS</b>	<small>DirectDrive PLUS LLC 137 West Brook Drive Haney Brook, PA, 15944 (810) 279-9837 Fax (810) 279-9809</small>
CHASSIS MFG				
MODEL			<b>DDP-7561</b>	<small>SCALE: 1/6</small>
APPARATUS				
WATER	FOAM		SIZE	DWG NO
PUMP GPM			B	\$ 10R140 - 2WD Rear Mounting System
				REV
				SHEET 1 OF 1