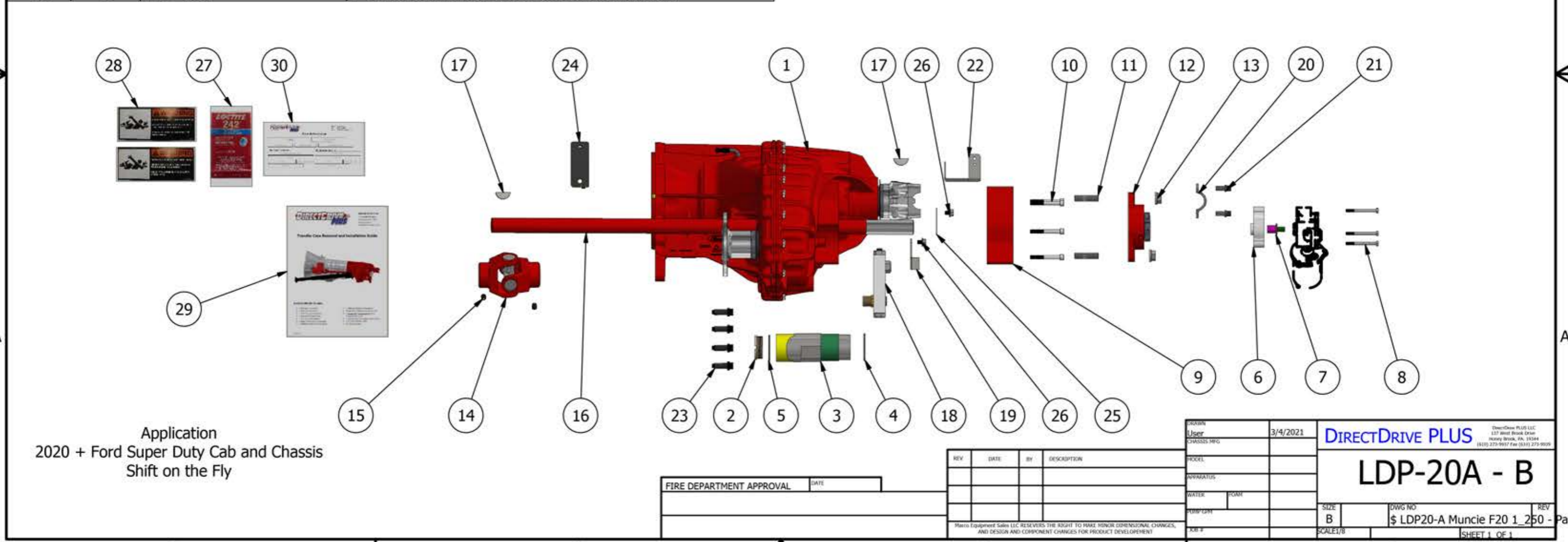


PARTS LIST			
ITEM	QTY	PART NUMBER	DESCRIPTION
1	1	Rear Cover and Filler Block	
2	1	DDP-4059	Machined Brass Nut, Front (2020+ Ford)
3	1	DDP-4058	Machine Aluminum Tube, O-Ring Grove, Threaded
4	1	MCM-946K138	Viton O-Ring Size -138
5	1	MCM-9464K136	Viton O-Ring Size -136
6	1	DDP 4010	Electric Actuator Spacer
7	1	DDP-4011	Drive Adapter, Electric Actuator (2017+ Ford & RAM)
8	3	MCM-91280A351	Zinc Cap Screw M6-1 x 65mm
9	1	DDP-4053	Bearing Mount Adapter Muncie - 2020+ Ford
10	5	MCM-92196A593	Socket Head SS 5_16 x 2_5 - Bearing Adapter
11	2	MCM-92997A383	1_2 Stud SS 2 in long - Stud Rear Bearing
12	1	SEA-SFT-20T HS	Sealmaster High Speed Flange Bearing
13	2	AIM-90WN120	Flange Nut Serrated SS
14	1	SPI-1310-ASY	Spicer 1310 U-Joint Assy
15	2	MCM- 93445A613	18-8 SS KNURL-GRIP CUP POINT SET SCREW
16	1	DDP-4052	1" Shaft U Joint SAE B Flange 35.5 inches Long

PARTS LIST			
ITEM	QTY	PART NUMBER	DESCRIPTION
17	2	SSS-118049	#1010 Carbon Woodruff Key
18	1	DDP-4056	Oil Fill Tube, Aluminum, (2020+ Ford)
19	1	DDP-4061	Bracket Oil Fill, (2020+ Ford)
20	2	FOR-E4HZ-4A254-A	U-Joint Strap
21	4	FOR-F1HZ-4N272-A	U-Joint Strap Bolt
22	1	DDP-4022	Mounting Bracket Actuator Connector
23	4	FOR-N811880-S100	Bolt Forward Driveshaft
24	1	DDP-4063	10R140 Bracket Fuel Line
25	1	MAR-0005	Plate Serial
26	2	MCM-97646A251	SS Flange Bolt, 5/16"-18 x 3/8" (1-Ford & RAM Serial Tag)
27	1	LOC-24025	Loctite 242 Treadlocker Blue
28	2	MAR-2200	Rotating Shaft Warning
29	1	LDP-2020 Install Manual	Installation Manual 2017 + Ford
30	1	LDP-2020 Warranty Card	Warranty Registration Card



Application
2020 + Ford Super Duty Cab and Chassis
Shift on the Fly

FIRE DEPARTMENT APPROVAL _____ DATE _____

REV	DATE	BY	DESCRIPTION

DRAWN	3/4/2021	DIRECTDRIVE PLUS 137 West Brook Drive Honey Brook, PA, 19344 610.273.9937 Fax 610.273.9939
USER		
MODEL		
APPARATUS		
WATER	FOAM	LDP-20A - B
PUMP/GM		
SIZE	DWG NO	REV
B	\$ LDP20-A Muncie F20 1_250	
SCALE:1/8"	SHEET 1 OF 1	

Parts II