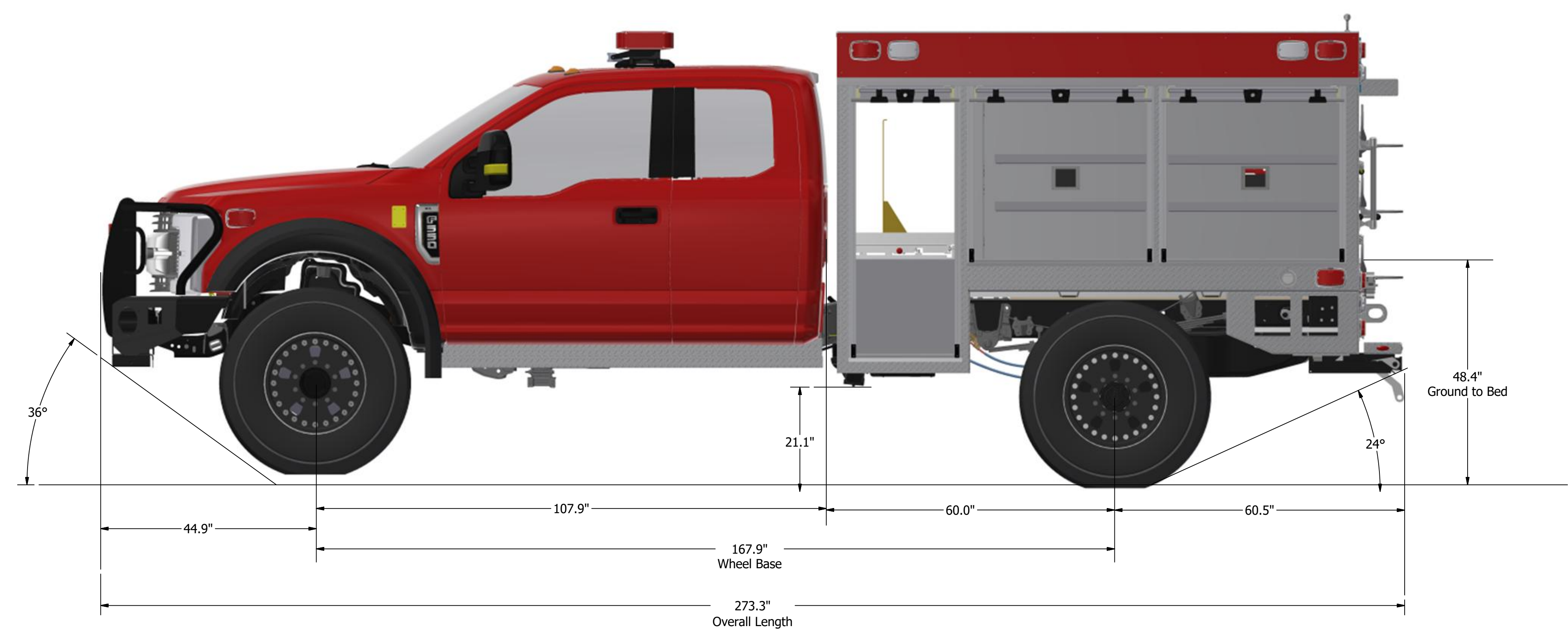
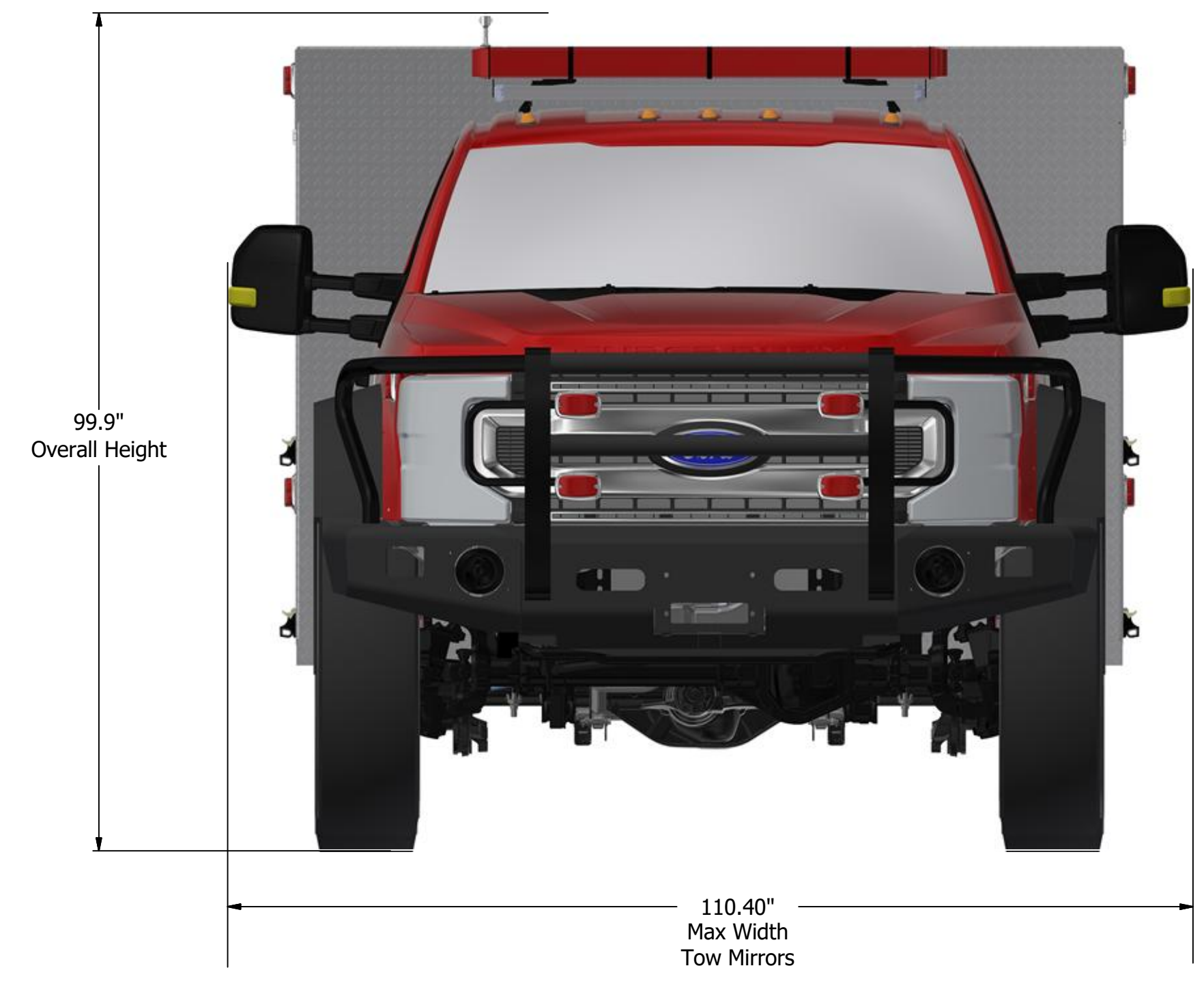
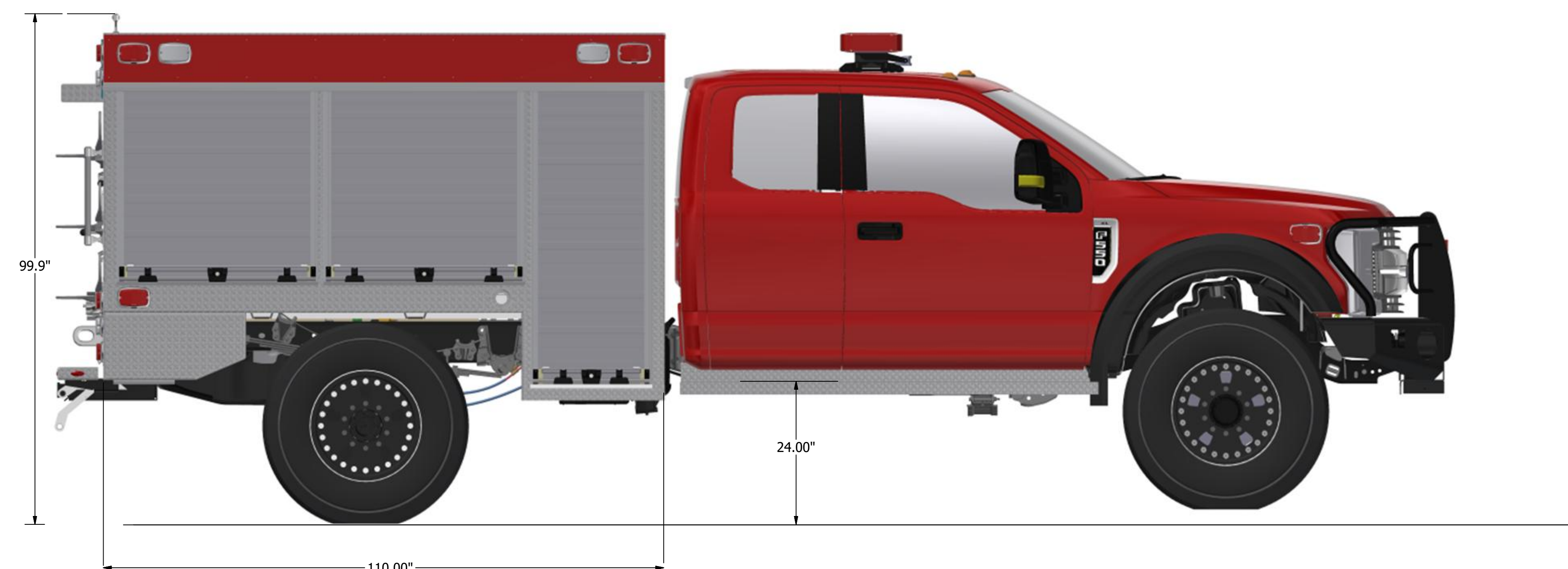


8 7 6 5 4 3 2 1

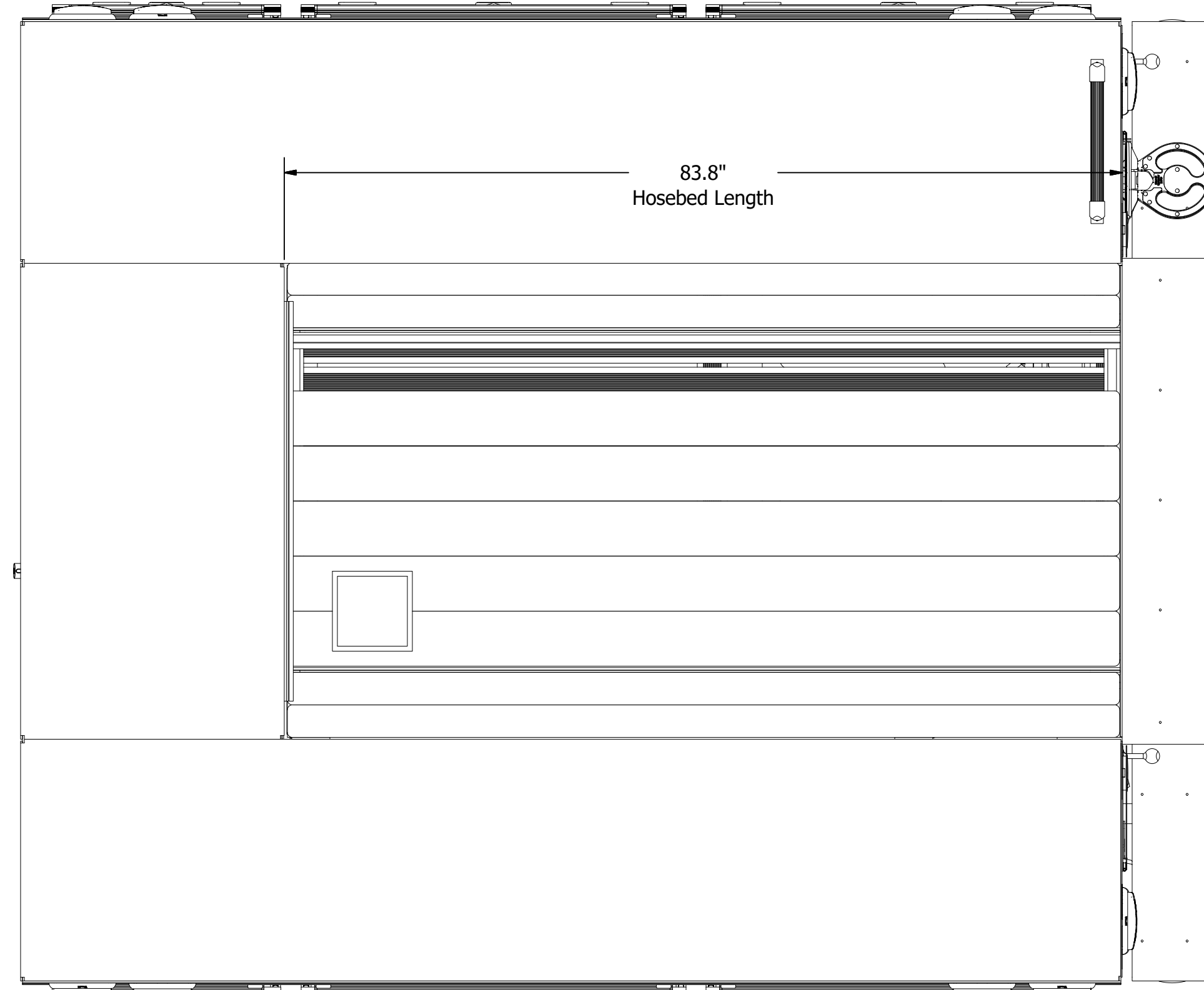
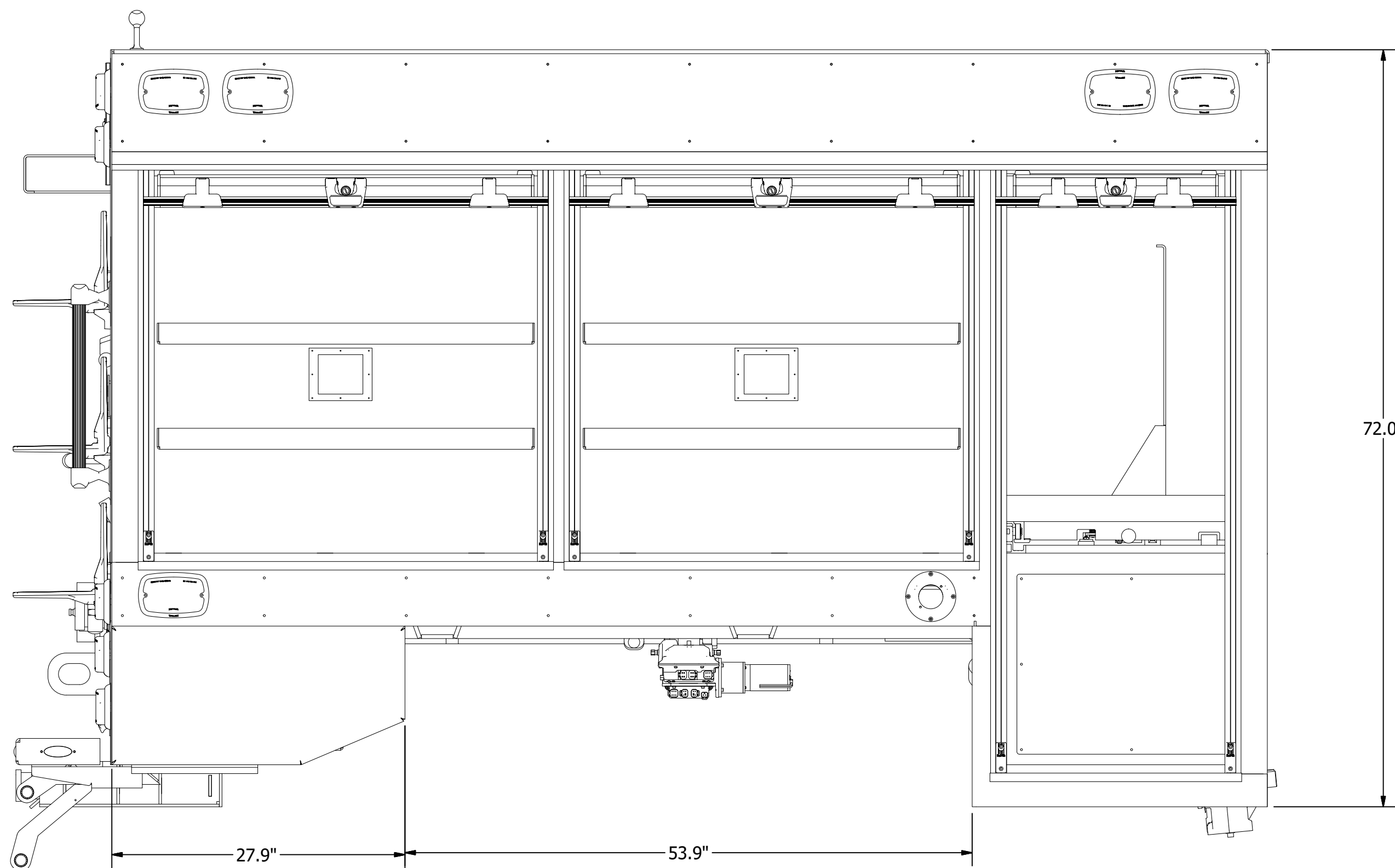


8 7 6 5 4 3 2 1

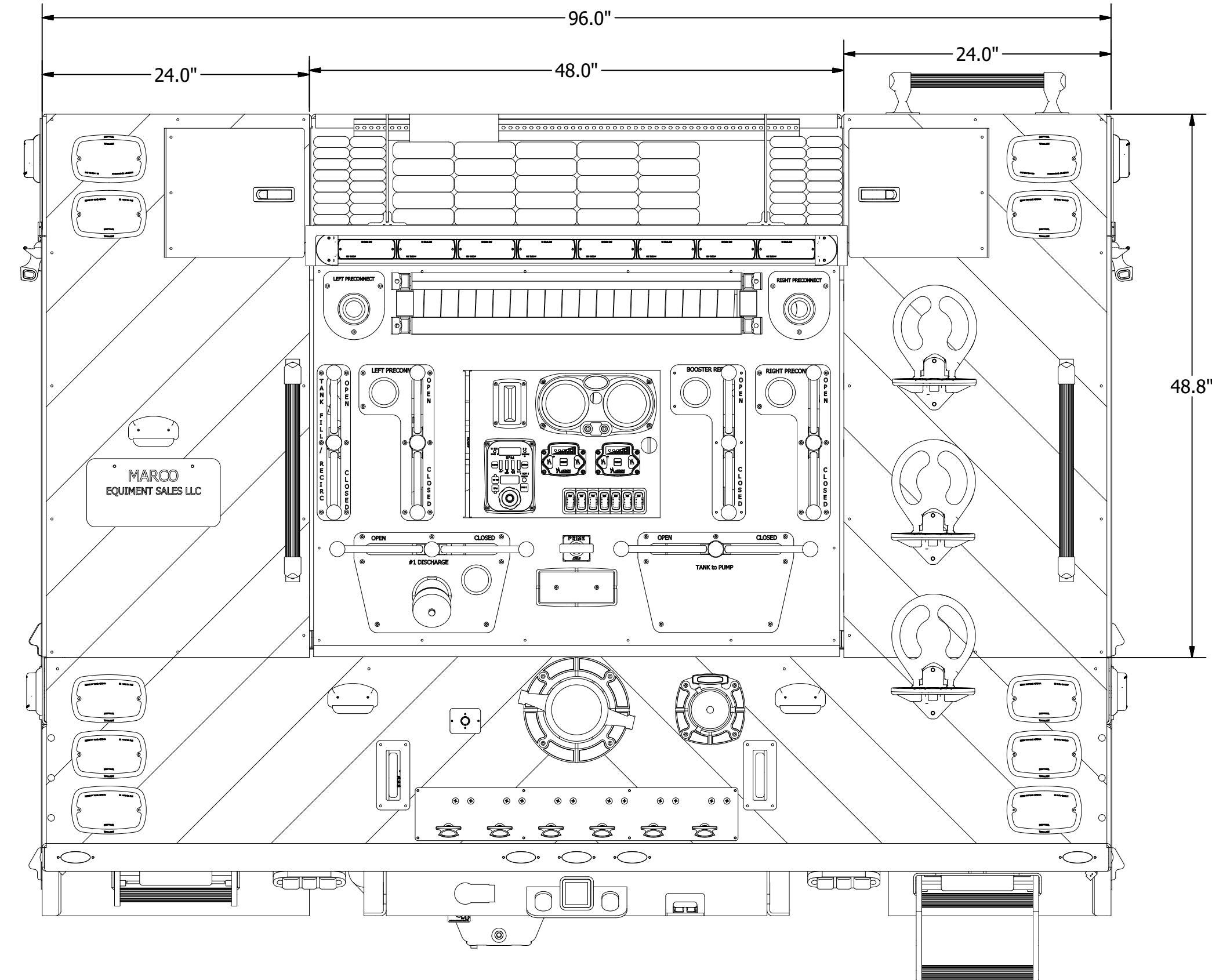
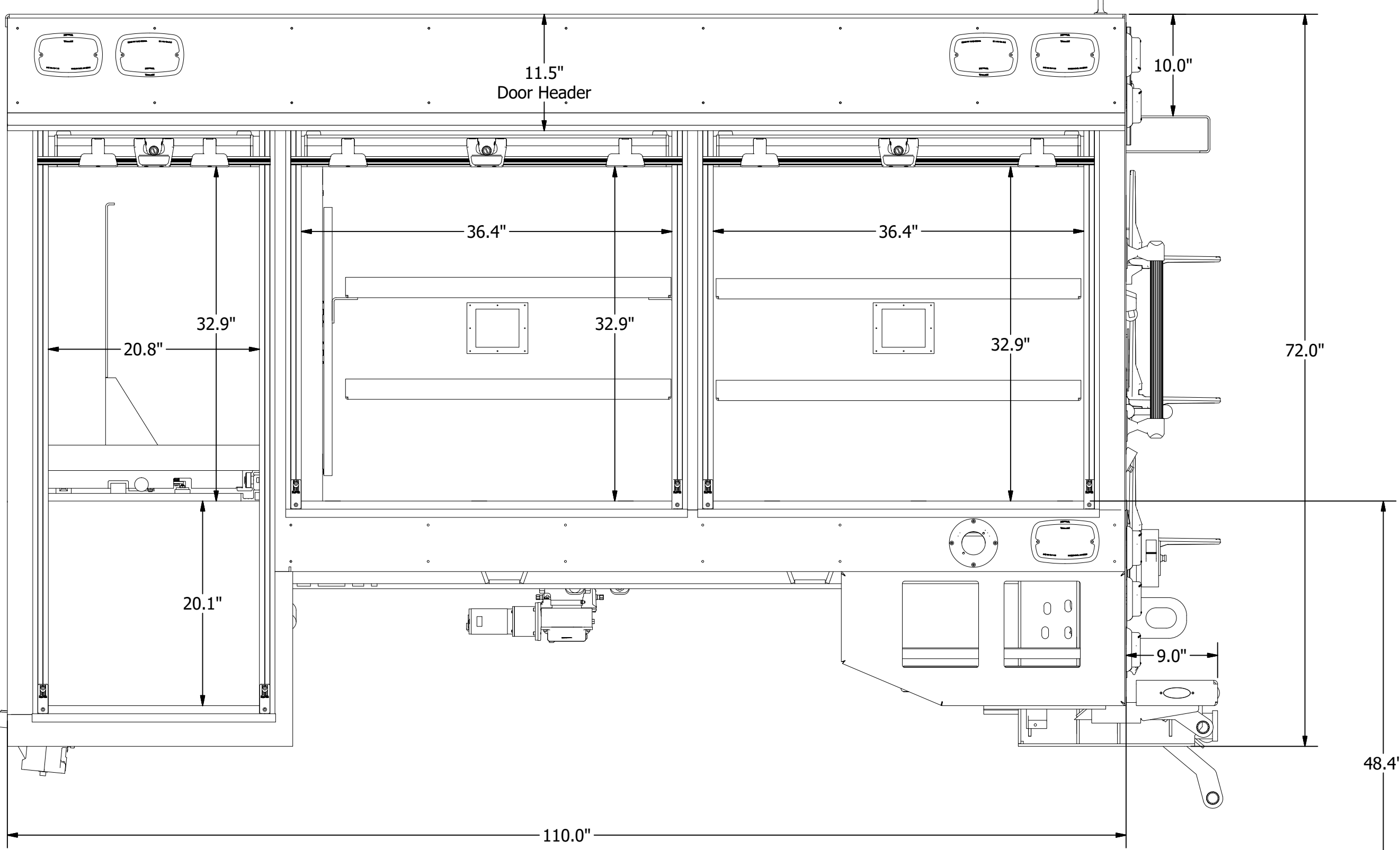
FIRE DEPARTMENT APPROVAL		DATE		SIGNATURE	
REV	DATE	BY	DESCRIPTION	MODEL	DATE
A	9-9-23			FORD F550 BRUSH	4/28/2022
D				350	
				MAR-376	

MARCO
MARCO EQUIPMENT GROUP, LLC
100 Industrial Ave., East Fishkill, NY 12526
(845) 352-8000

Richmond VT Brush Truck
Body Assembly - East Fishkill
Sheet 1 of 1



Body Dimensions



Ground Plane

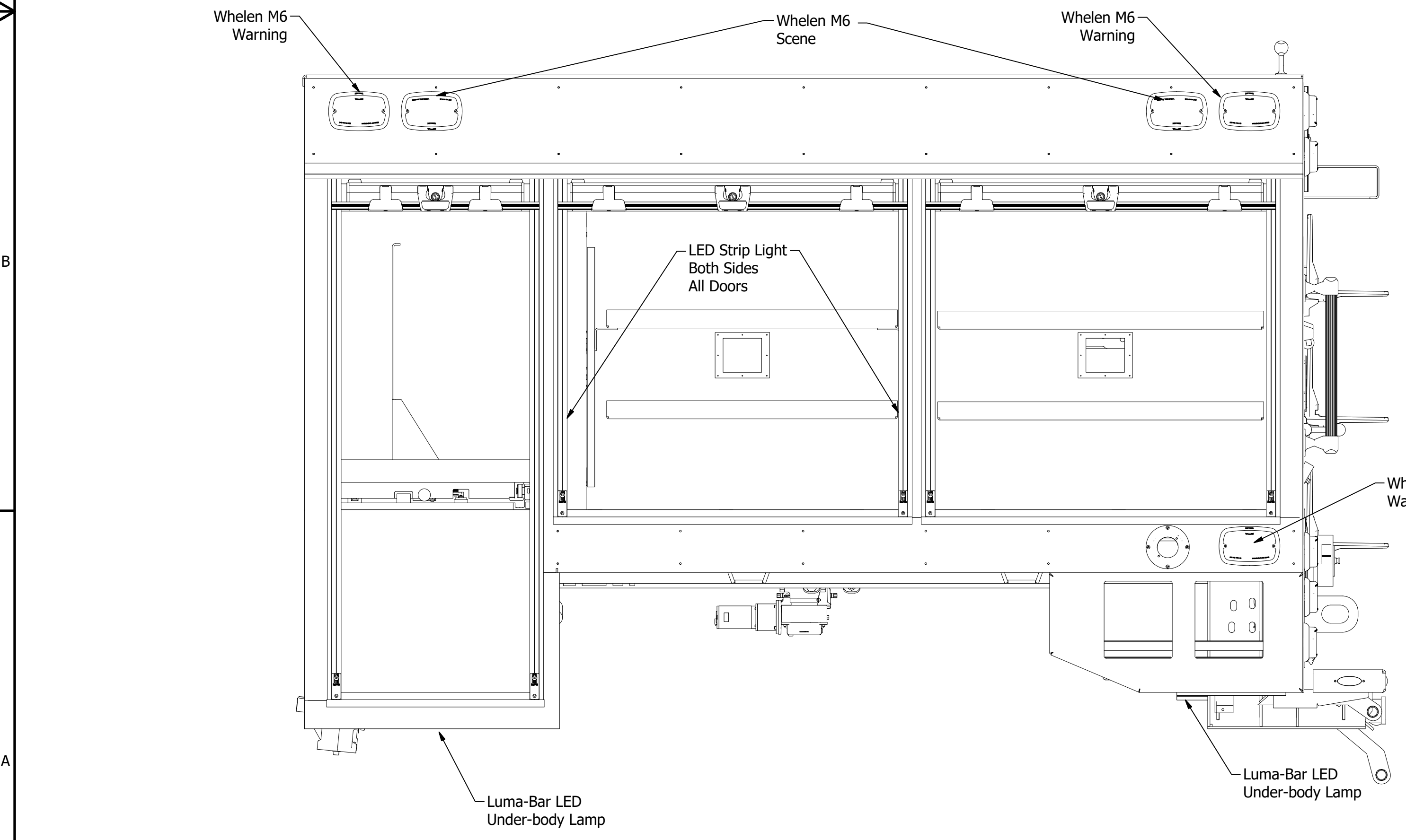
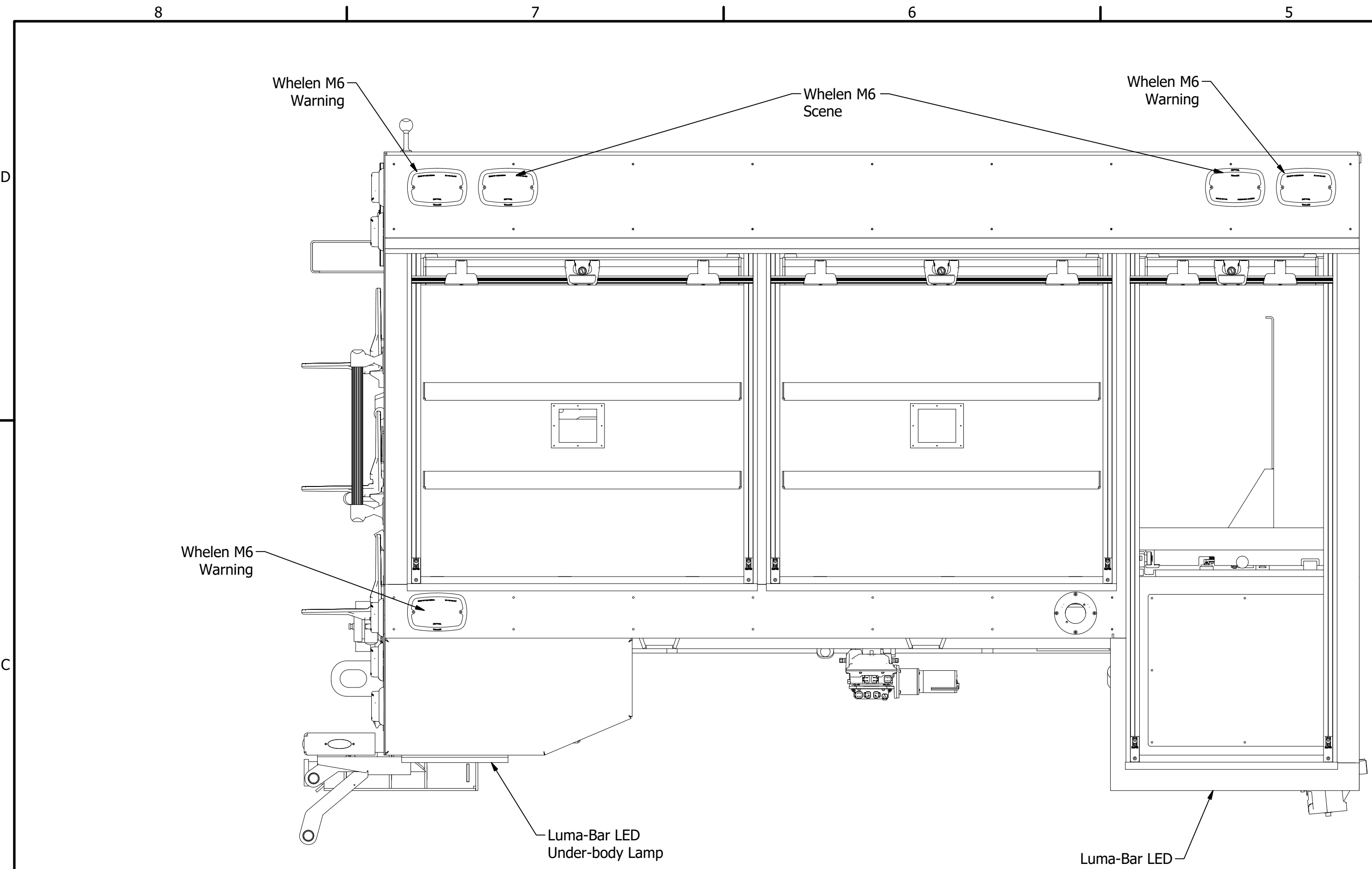
FIRE DEPARTMENT APPROVAL _____ DATE _____

REV	DATE	BY	DESCRIPTION
A	9-9-23		

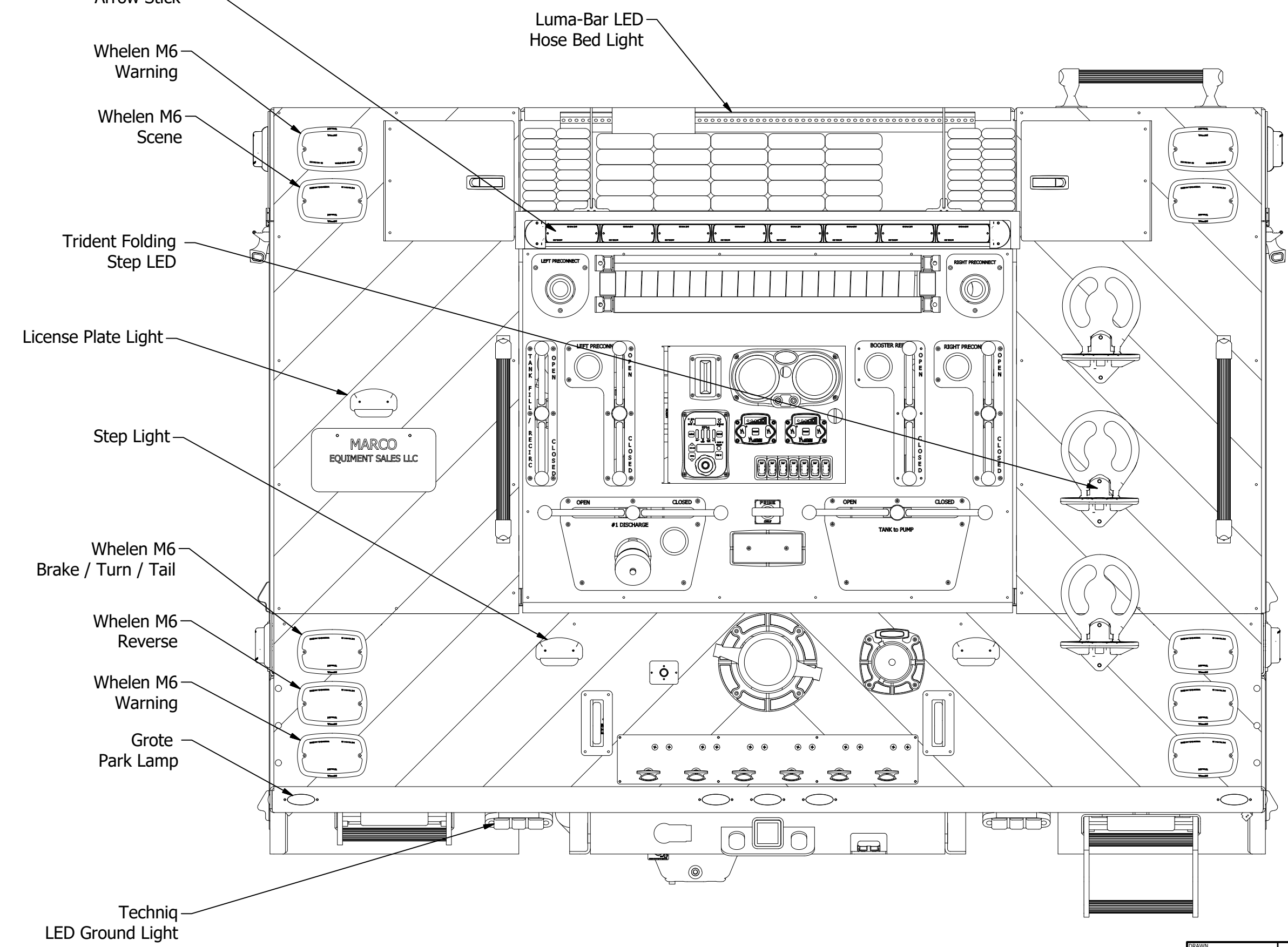
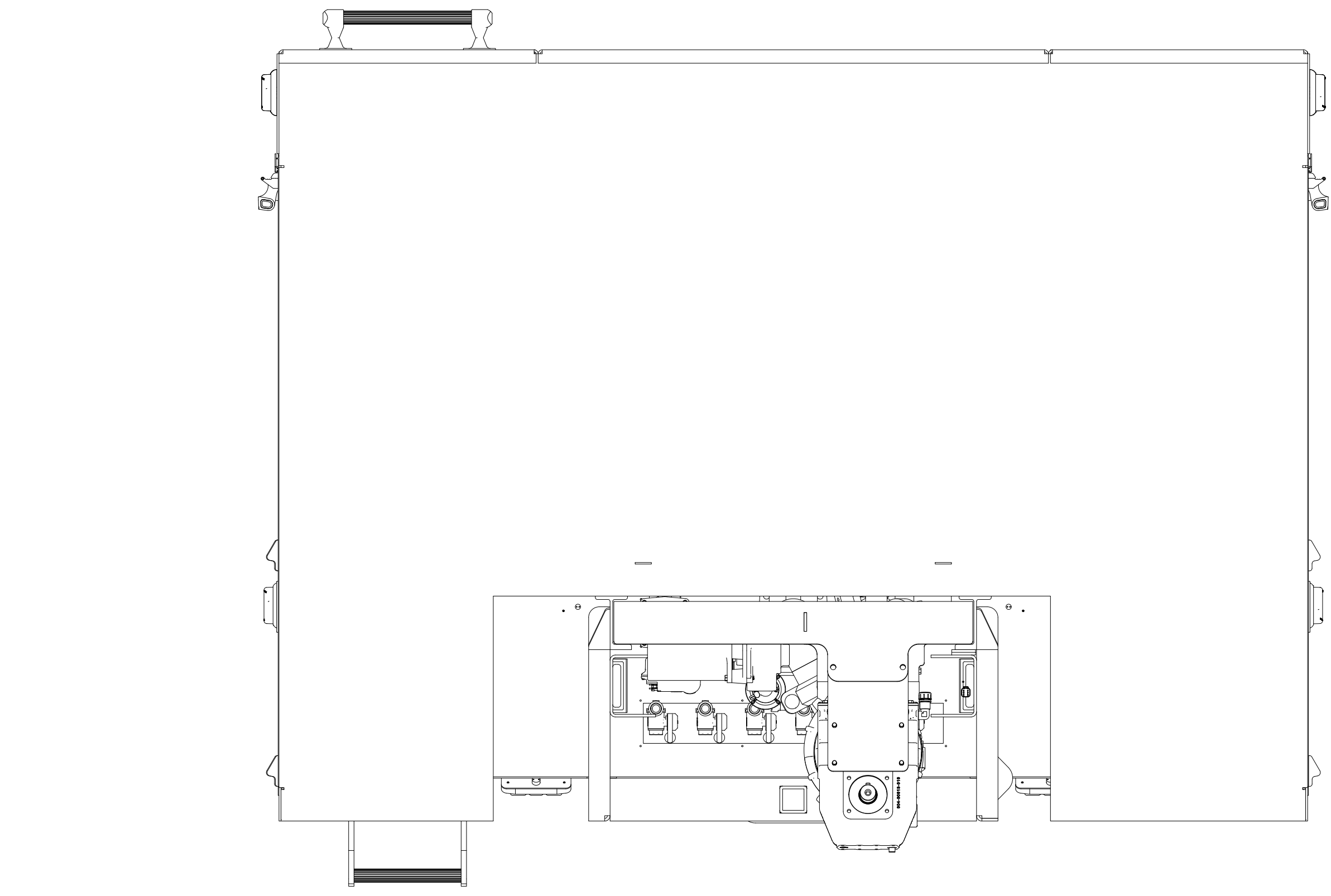
DATE	4/28/2022	BY	
MODEL	Ford	MAKE	Ford
MODEL	F-550	MAKE	Ford
MODEL	Brush	MAKE	Brush
MODEL	350	MAKE	Brush
MODEL	500	MAKE	Brush
MODEL	MAR-326	MAKE	MARCO

DATE	4/28/2022	BY	
MODEL	Ford	MAKE	Ford
MODEL	F-550	MAKE	Ford
MODEL	Brush	MAKE	Brush
MODEL	350	MAKE	Brush
MODEL	500	MAKE	Brush
MODEL	MAR-326	MAKE	MARCO

MARCO
 Fire Department
 Richmond F.D
 Brush Truck
 Body Assembly - East Fishkill
 SHEET 1 OF 5



Lighting

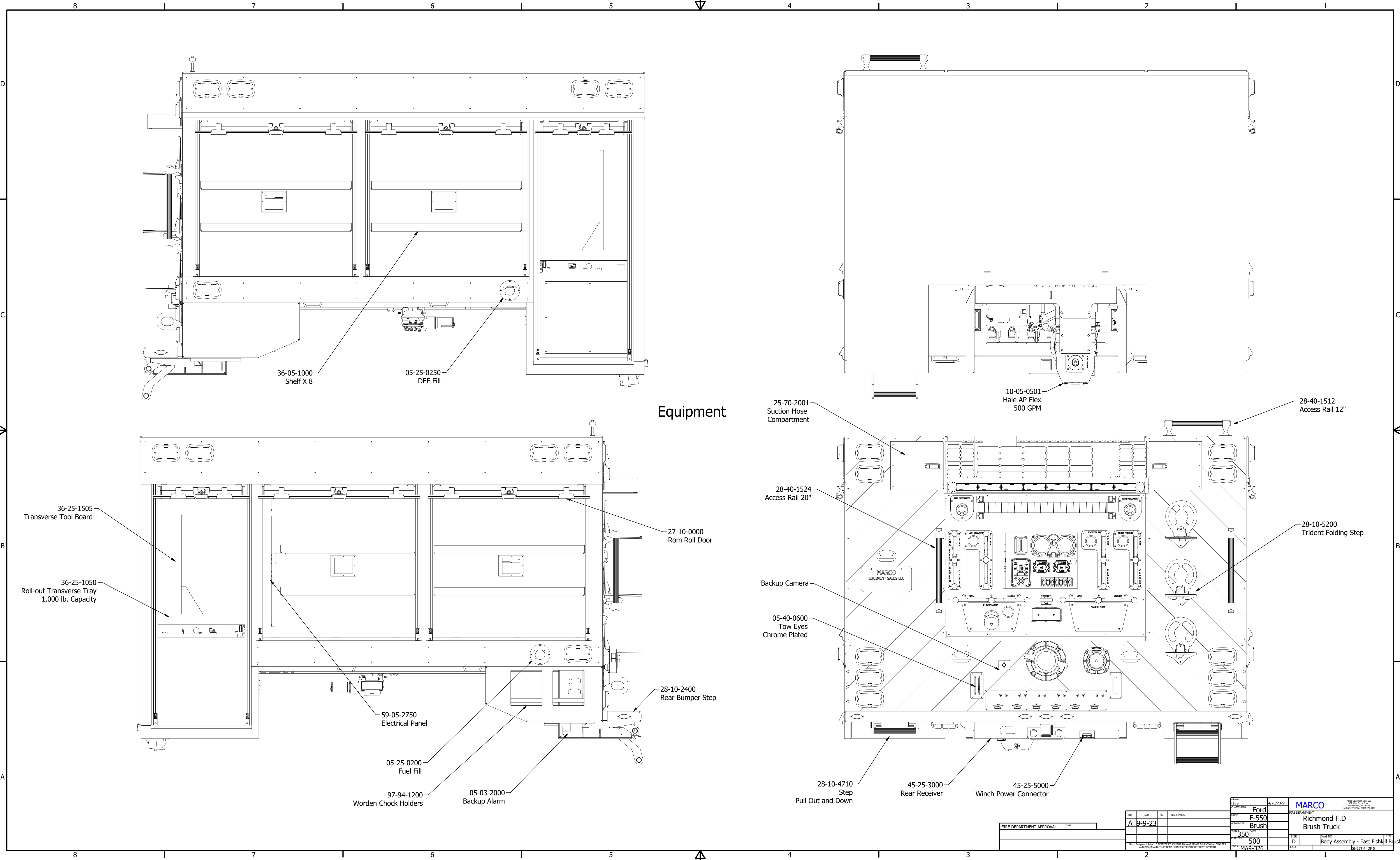


FIRE DEPARTMENT APPROVAL _____ DATE _____

REV	DATE	BY	DESCRIPTION
A	9-9-23		

DATE	4/28/2022		
MODEL	Ford F-550		
STATUS	Brush	FIRE DEPARTMENT Richmond F.D Brush Truck	
REV	350	SIZE	D
REV	500	SCALE	1:1
REV	MAR-226	REV	D

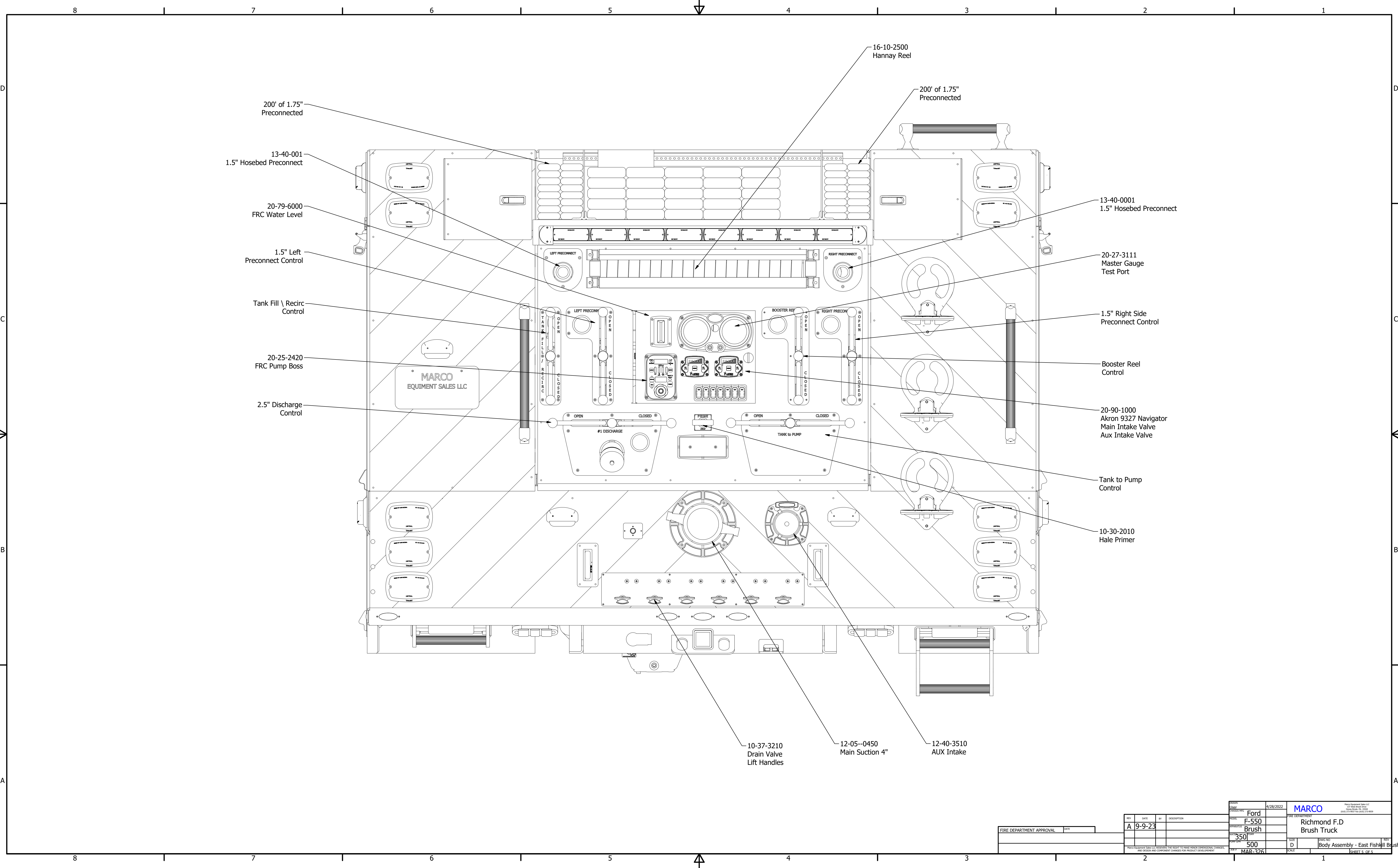
Richmond F.D
Brush Truck
Body Assembly - East Fishkill
Sheet 3 of 5



Equipment

REV		DATE	BY	DESCRIPTION	REV	DATE	BY	DESCRIPTION
A	9-9-23							
FIRE DEPARTMENT APPROVAL				DATE				
MARCO				EQUIPMENT SALES LLC				
350				500				
MAR-326				MAR-326				

Model	Ford	4/28/2022	MARCO	
Model	F-550		Richmond F.D	
Model	Brush		Brush Truck	
Model	500		Body Assembly - East Fishkill	
Model	500		Sheet 4 of 5	



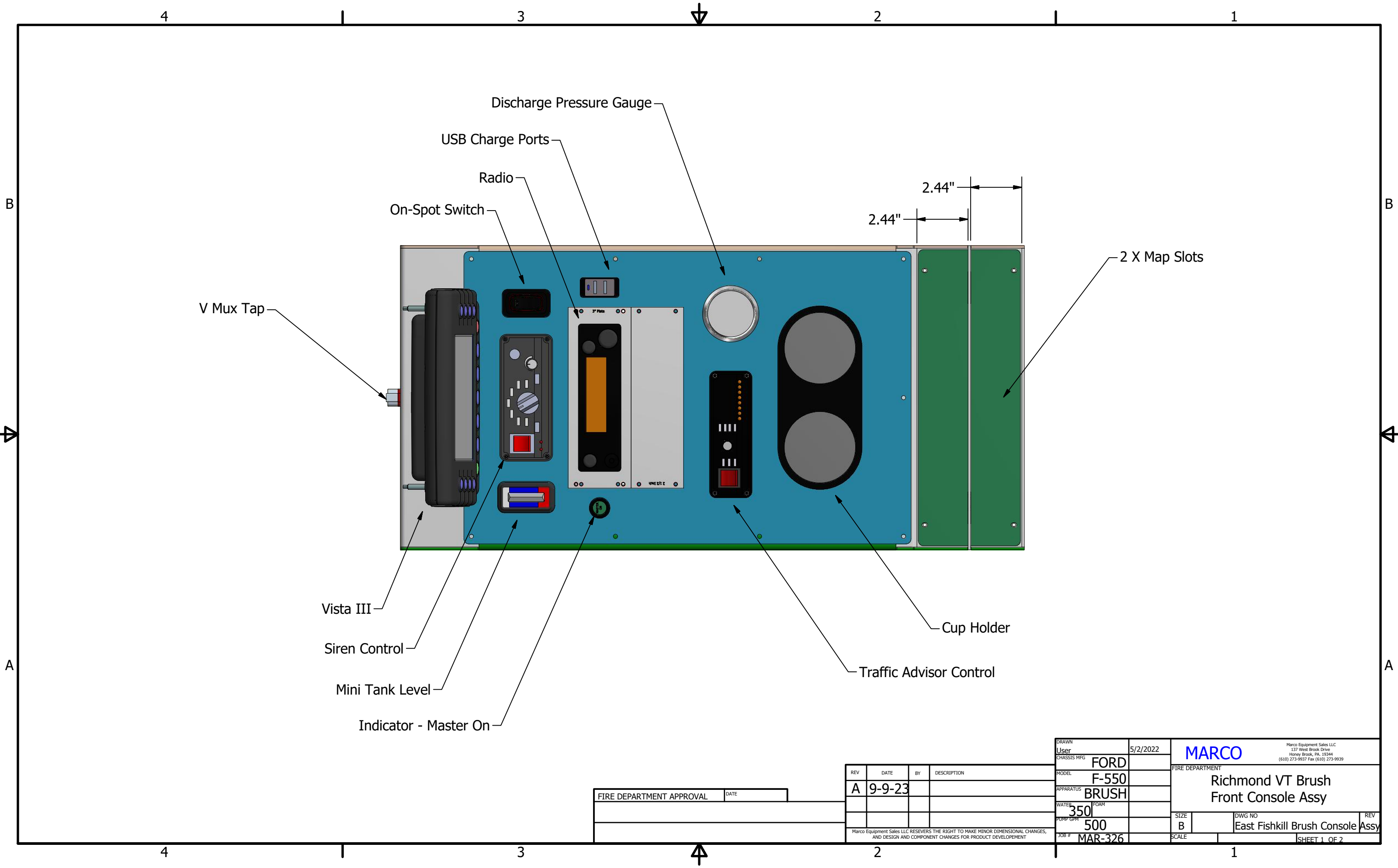
FIRE DEPARTMENT APPROVAL _____ DATE _____

REV	DATE	BY	DESCRIPTION
A	9-9-23		
D			

MODEL	Ford	DATE	4/28/2022
SIZE	F-550		
TYPE	Brush		
DISCHARGE	350		
PRICE	500		
PART	MAR-326		

MARCO		MARCO EQUIPMENT SALES LLC 117 Franklin Ave. #200 Lynchburg, VA 24502 (434) 221-9337 Fax: (434) 221-8909	
RICHMOND F.D		Brush Truck	
SIZE	D	PRICE	500
SCALE			

Richmond F.D
Brush Truck
Body Assembly - East Fishkill
Sheet 3 of 5



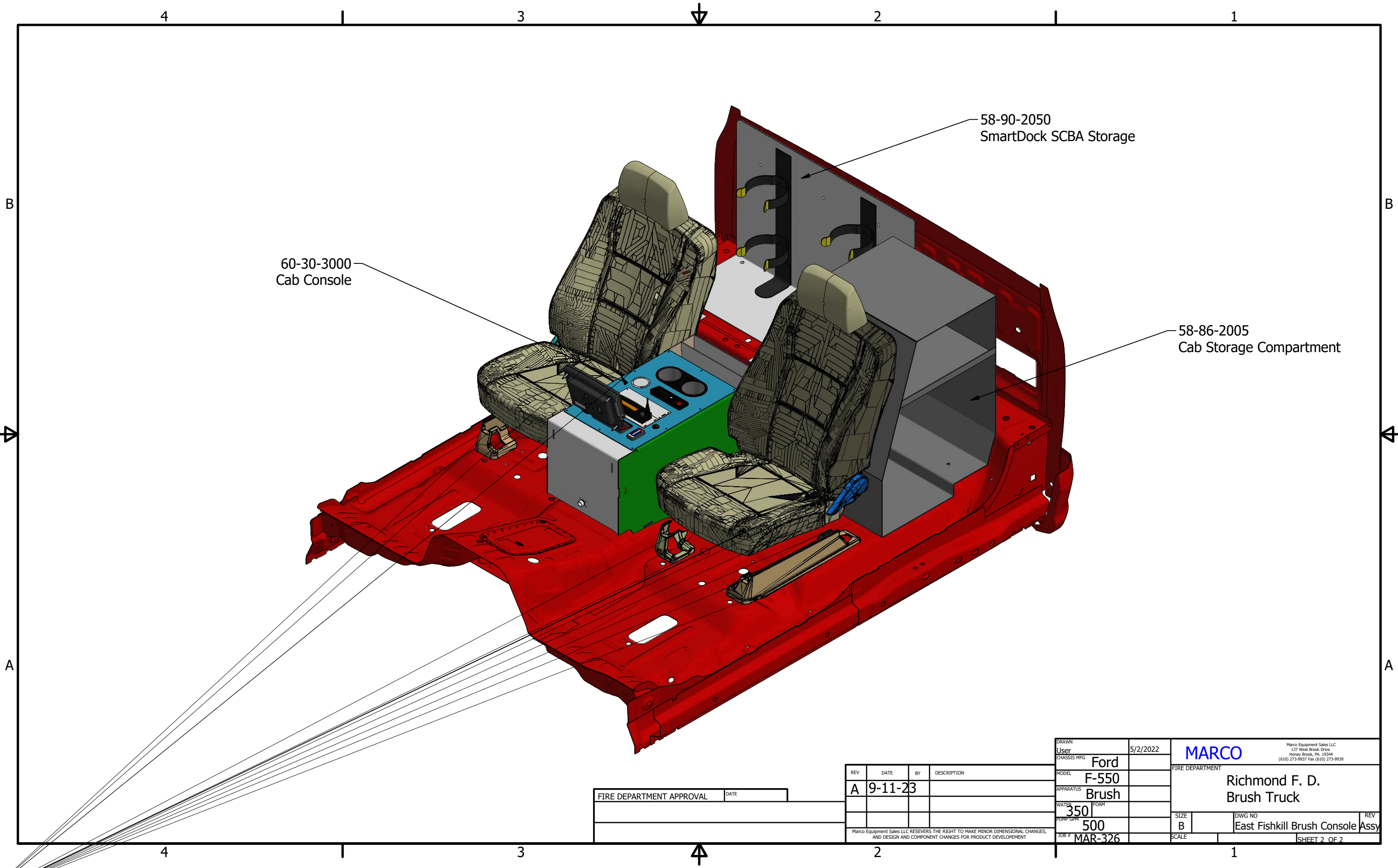
FIRE DEPARTMENT APPROVAL	DATE

REV	DATE	BY	DESCRIPTION
A	9-9-23		

DRAWN User	5/2/2022	MARCO FIRE DEPARTMENT	Richmond VT Brush Front Console Assy
CHASSIS MFG FORD			
MODEL F-550		SIZE B	DWG NO East Fishkill Brush Console Assy
APPARATUS BRUSH			
WATER PUMP 350		SCALE	SHEET 1 OF 2
FOAM PUMP 500			
JOB # MAR-326			

Marco Equipment Sales LLC RESEVERES THE RIGHT TO MAKE MINOR DIMENSIONAL CHANGES, AND DESIGN AND COMPONENT CHANGES FOR PRODUCT DEVELOPMENT

Marco Equipment Sales LLC
137 West Brook Drive
Honey Brook, PA, 19344
(610) 273-9937 Fax (610) 273-9939



60-30-3000
Cab Console

58-90-2050
SmartDock SCBA Storage

58-86-2005
Cab Storage Compartment

FIRE DEPARTMENT APPROVAL _____ DATE _____

REV	DATE	BY	DESCRIPTION
A	9-11-23		

DRAWN User		5/2/2022		MARCO MARCO Equipment Sales LLC 137 West Brook Drive Honey Brook, PA, 19344 (610) 273-9937 Fax (610) 273-9939	
CHASSIS MFG Ford		MODEL F-550			
APPARATUS Brush		WATER PUMP GPM 350		FIRE DEPARTMENT Richmond F. D. Brush Truck	
PUMP GPM 500		JOB # MAR-326		SIZE B	DWG NO East Fishkill Brush Console Assy
SCALE				REV SHEET 2 OF 2	

Marco Equipment Sales LLC RESEVES THE RIGHT TO MAKE MINOR DIMENSIONAL CHANGES,
AND DESIGN AND COMPONENT CHANGES FOR PRODUCT DEVELOPMENT