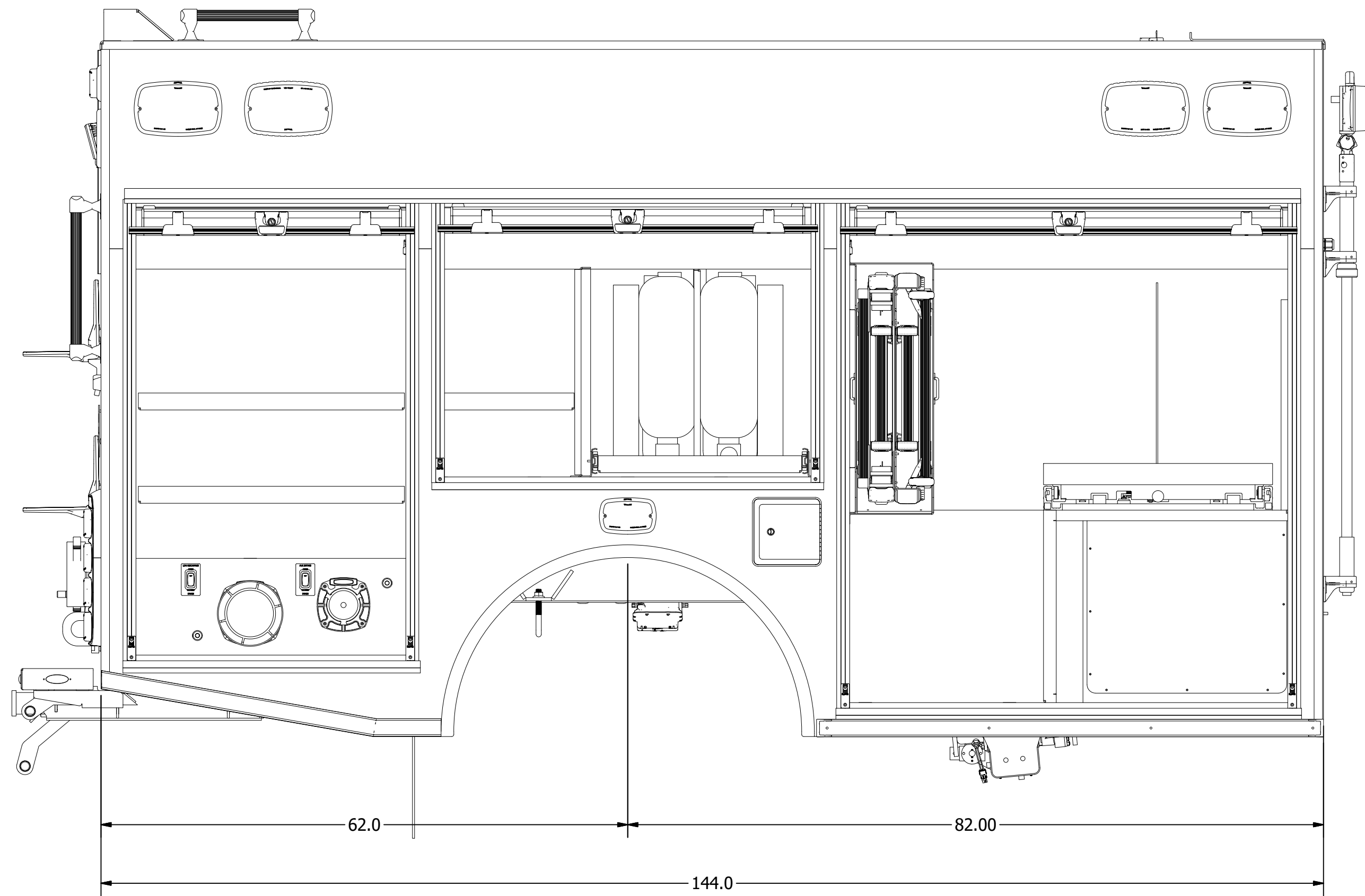
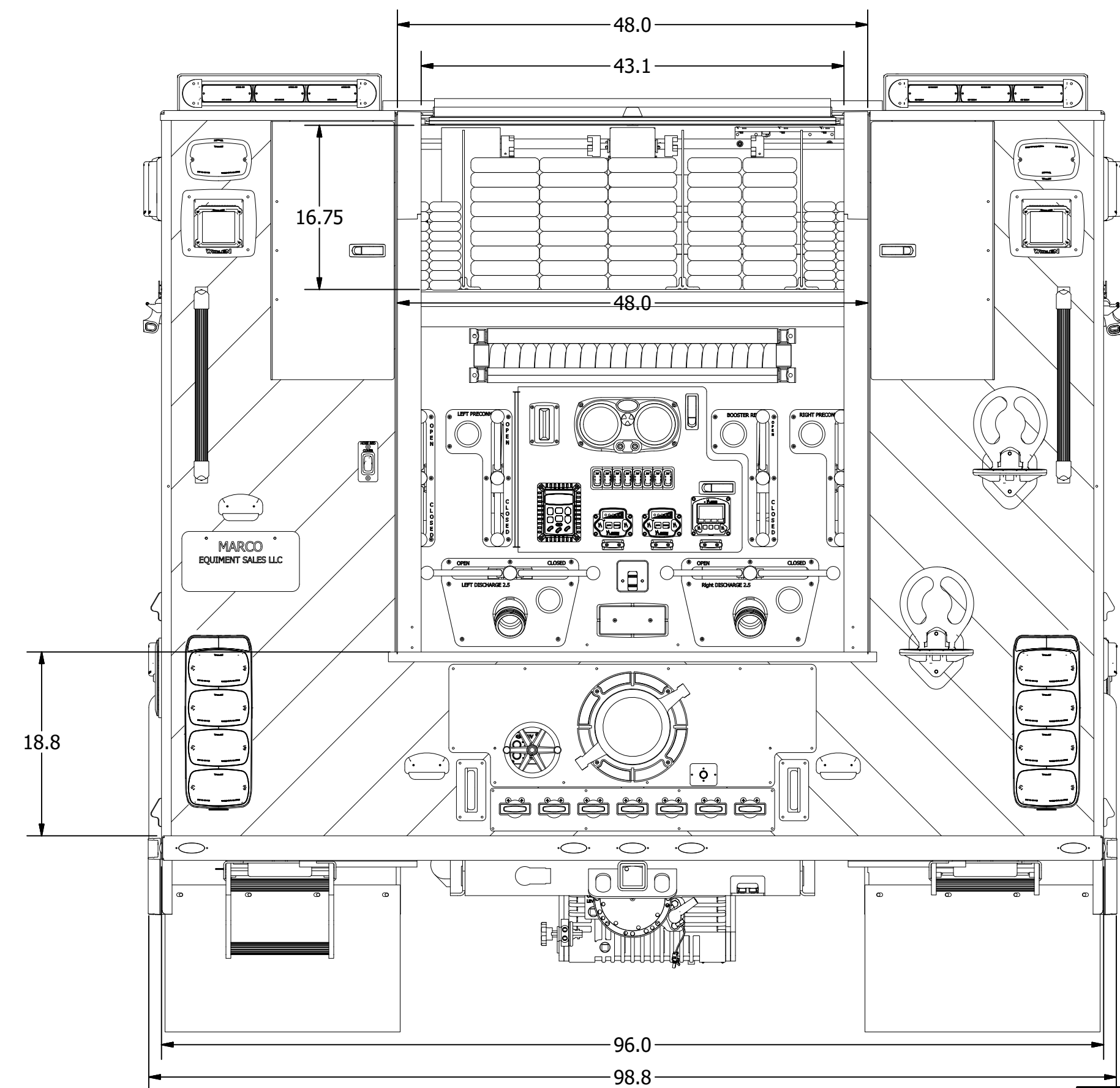
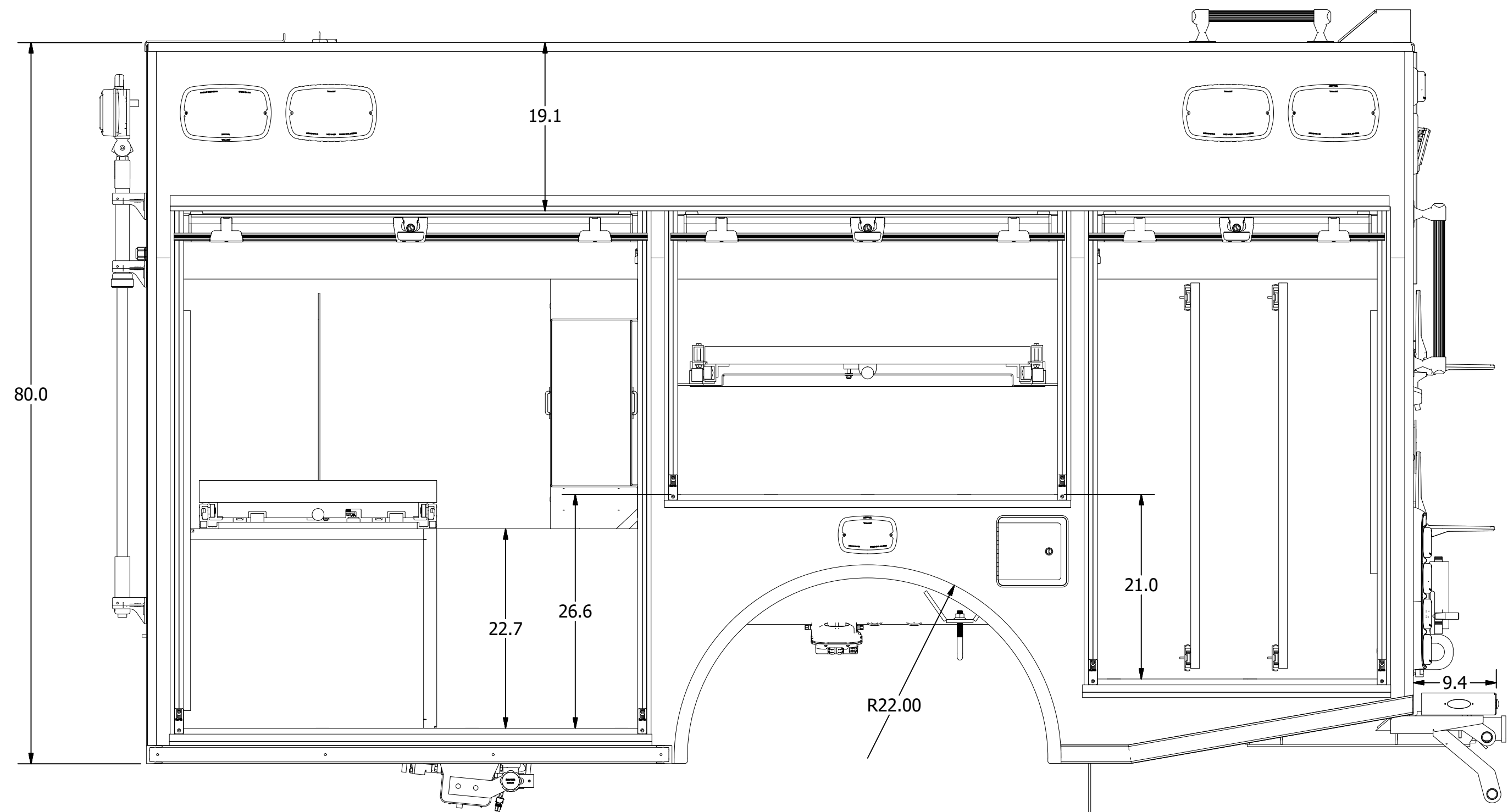
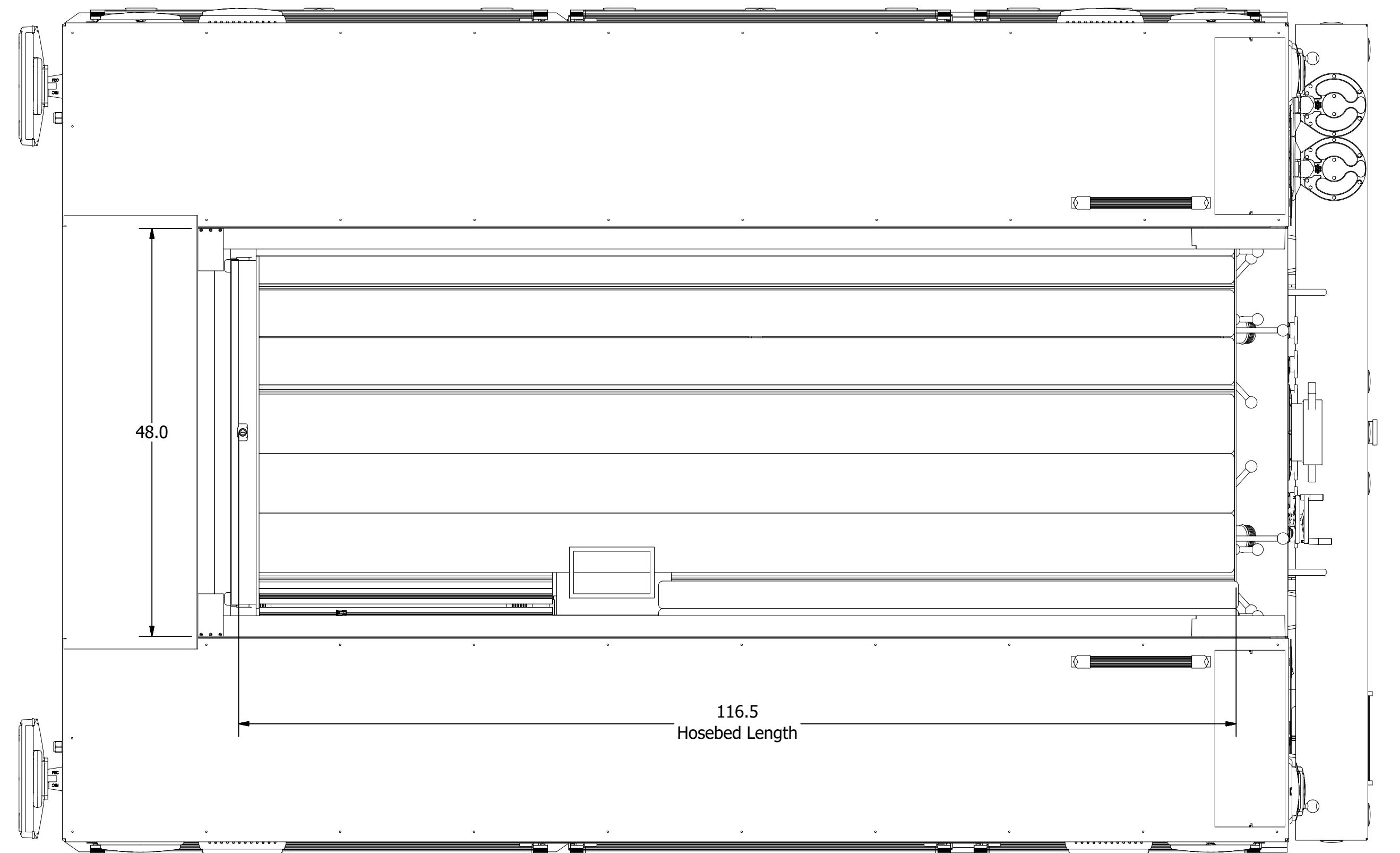


FIRE DEPARTMENT APPROVAL		DATE		BY		DESCRIPTION		310 1250		5/18/2020 FORD 600 Attack 1250		MARCO Hobbie Fire Dept Mini Pumper		Hobbie - Mini-Pumper - Renderings 1 of 1	
--------------------------	--	------	--	----	--	-------------	--	-------------	--	--	--	---	--	---	--

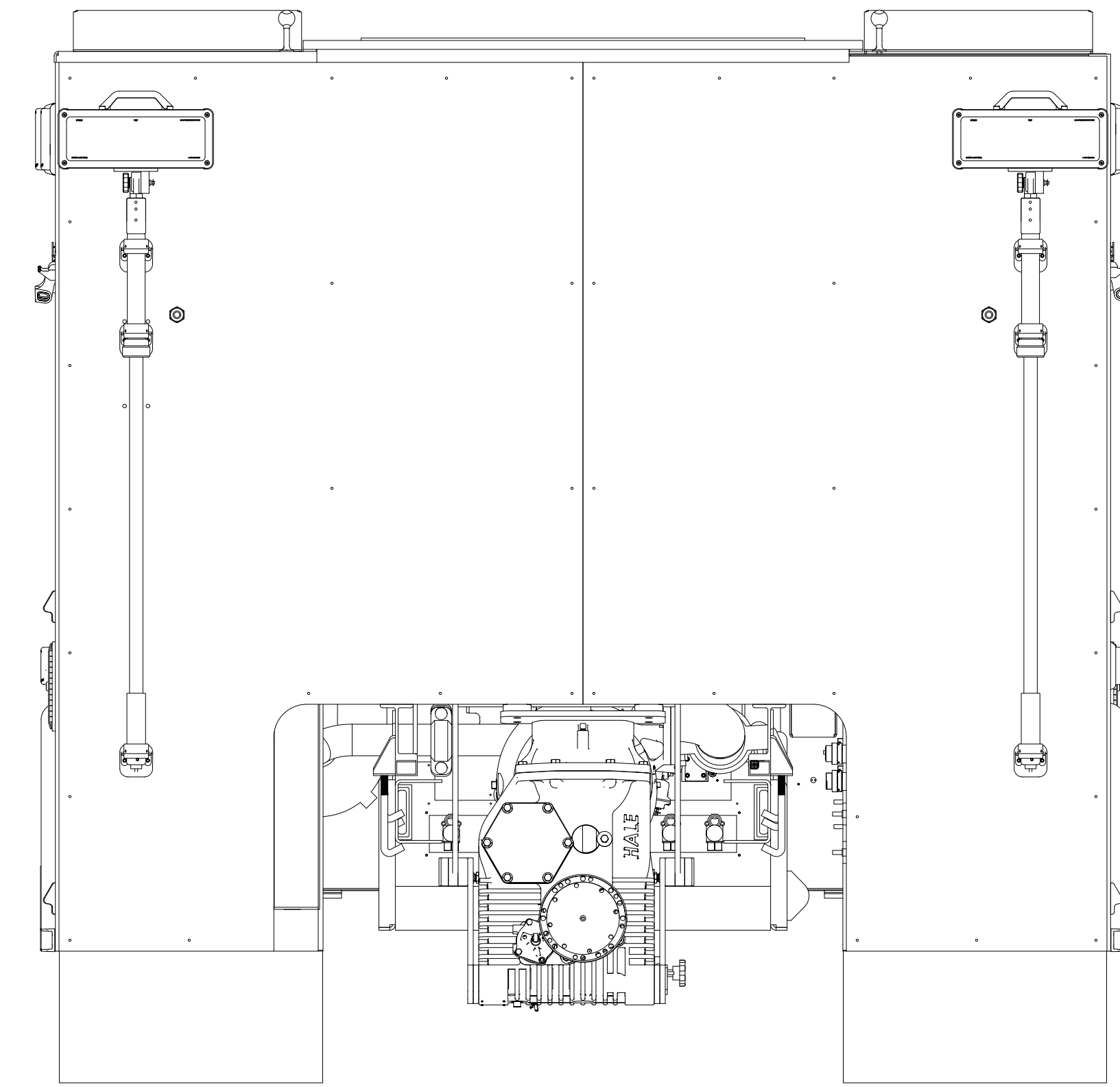
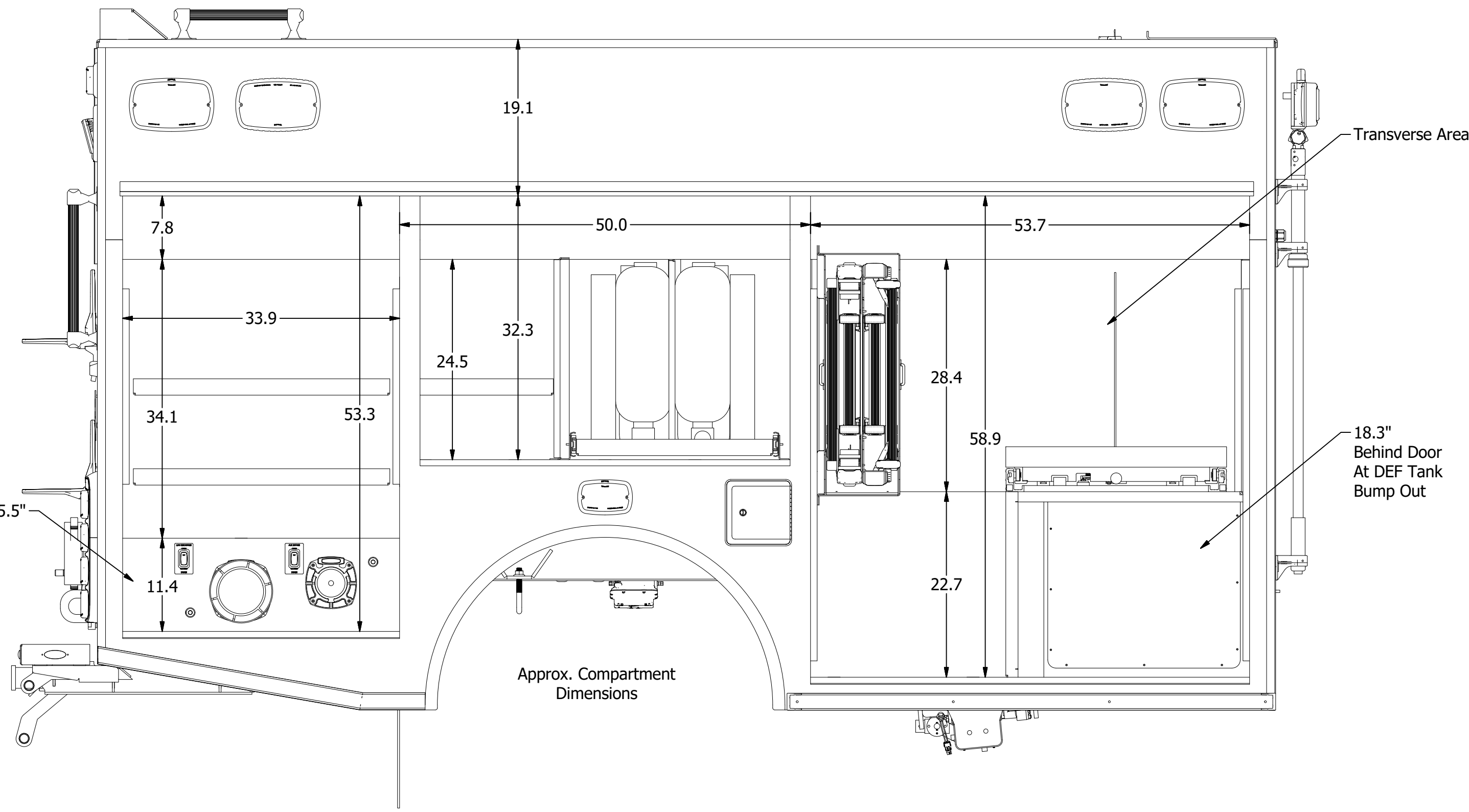


Body Dimensions

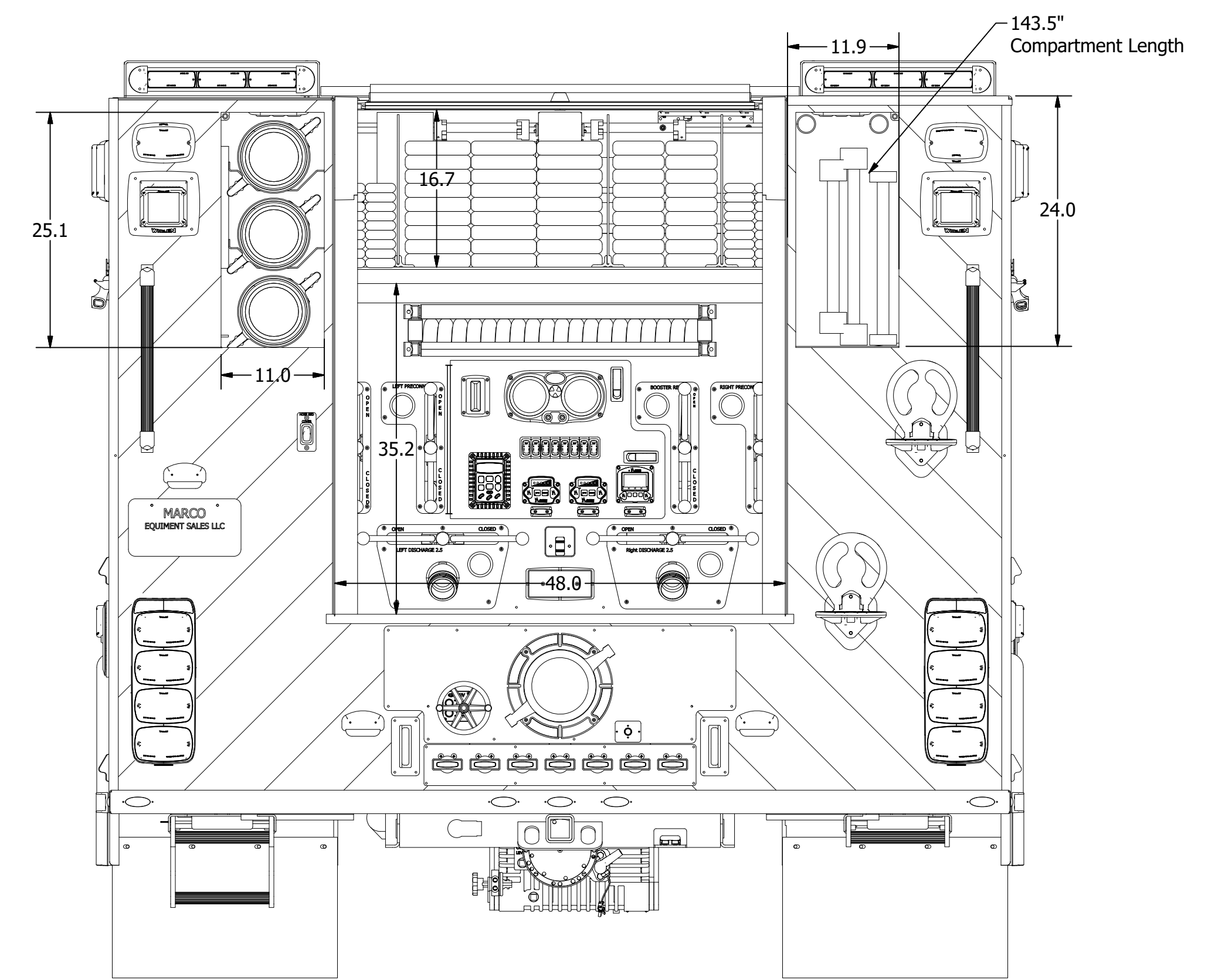
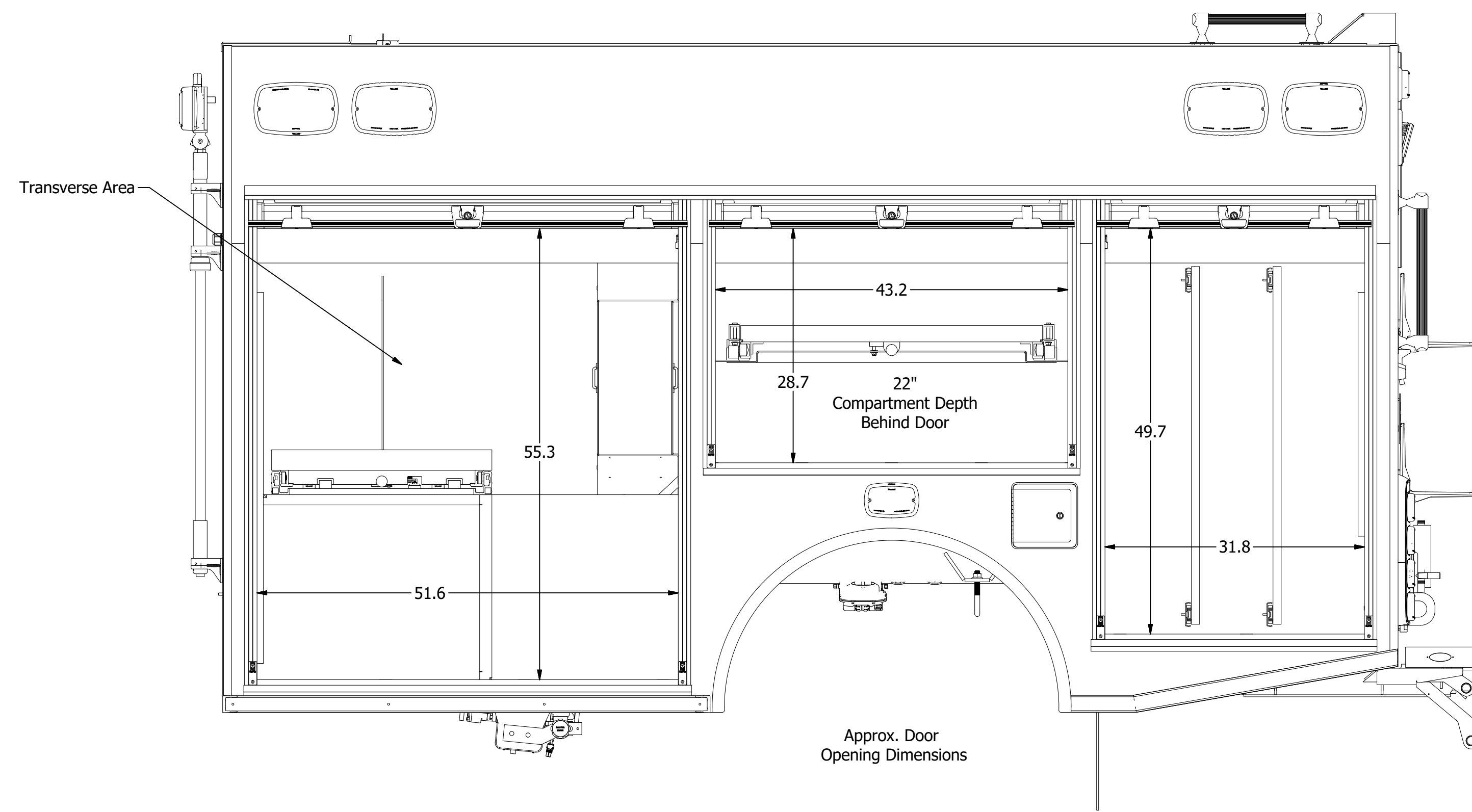


FIRE DEPARTMENT APPROVAL		DATE	BY	DESCRIPTION	REV	DATE	BY	DESCRIPTION
MARCO EQUIPMENT SALES LLC		5/18/2020		FORD 600 Attack		310		
Hobbie Fire Dept Mini Pumper						1250		
Hobbie - Mini-Pumper - Body Dimensions								

8 7 6 5 4 3 2 1



Compartment Dimensions



8 7 6 5 4 3 2 1

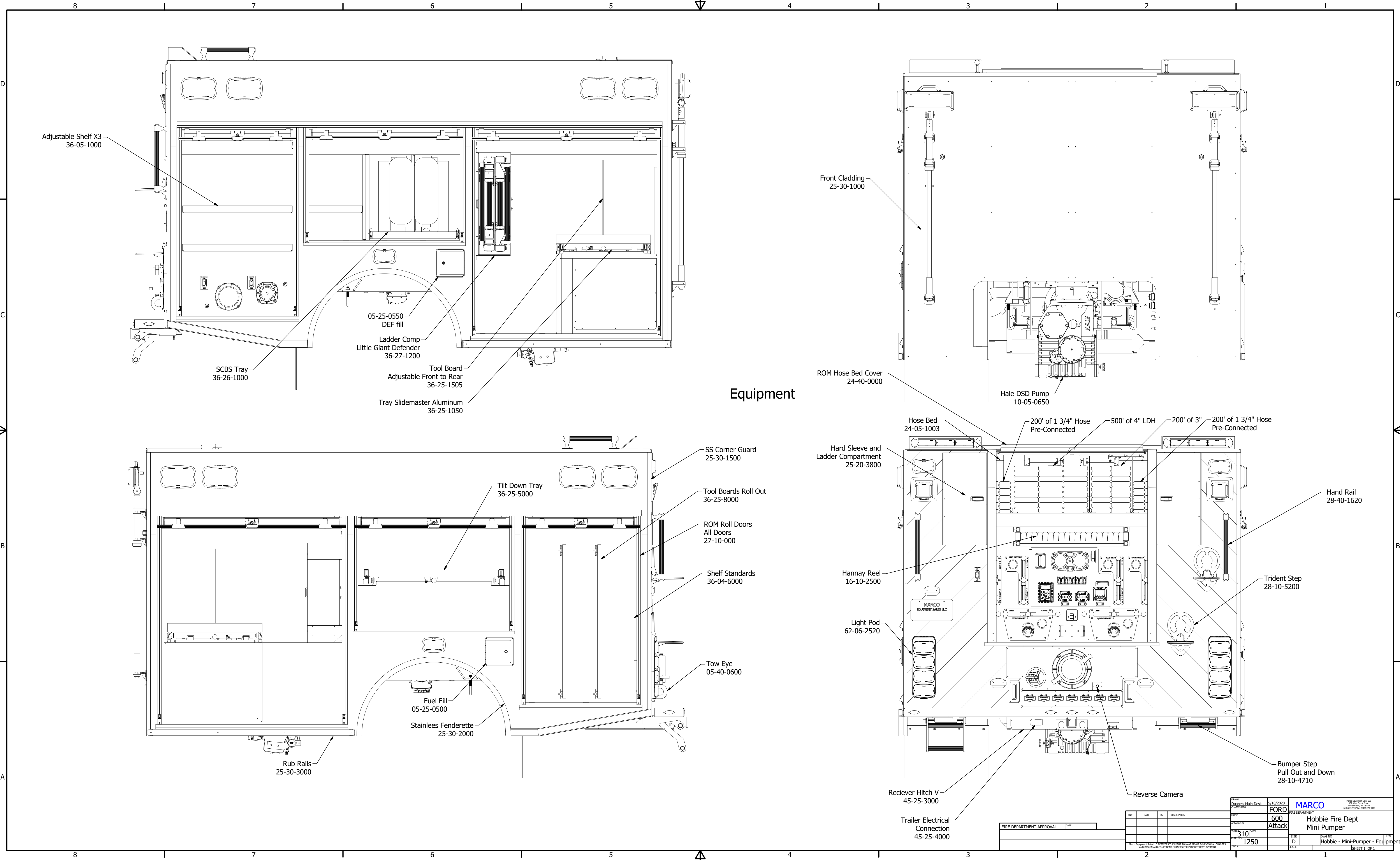
FIRE DEPARTMENT APPROVAL		DATE	BY	DESCRIPTION	REV	DATE	BY	DESCRIPTION

REVISED BY	5/18/2020	5/18/2020	FORD	600	Hobbie Fire Dept
REVISED BY	310			Attack	Mini Pumper
REVISED BY	D	1250			Hobbie - Mini-Pumper - Compartment
REVISED BY					

DATE	5/18/2020	5/18/2020	5/18/2020
BY	FORD	310	D
DESCRIPTION	600	Attack	Hobbie - Mini-Pumper - Compartment
REVISED BY			

MARCO
 EQUIPMENT SALES LLC
 117 Franklin Ave. 2nd Fl.
 Jamaica, NY 11435
 (718) 551-8888

Hobbie Fire Dept
 Mini Pumper
 Hobbie - Mini-Pumper - Compartment
 SHEET 1 OF 1



Equipment

Adjustable Shelf X3
36-05-1000

SCBS Tray
36-26-1000

05-25-0550
DEF fill

Ladder Comp
Little Giant Defender
36-27-1200

Tool Board
Adjustable Front to Rear
36-25-1505

Tray Slidemaster Aluminum
36-25-1050

Front Cladding
25-30-1000

ROM Hose Bed Cover
24-40-0000

Hale DSD Pump
10-05-0650

Hose Bed
24-05-1003

200' of 1 3/4" Hose
Pre-Connected

500' of 4" LDH

200' of 3"

200' of 1 3/4" Hose
Pre-Connected

Hard Sleeve and
Ladder Compartment
25-20-3800

Hannay Reel
16-10-2500

Light Pod
62-06-2520

Reciever Hitch V
45-25-3000

Trailer Electrical
Connection
45-25-4000

SS Corner Guard
25-30-1500

Tool Boards Roll Out
36-25-8000

ROM Roll Doors
All Doors
27-10-000

Shelf Standards
36-04-6000

Tow Eye
05-40-0600

Tilt Down Tray
36-25-5000

Fuel Fill
05-25-0500

Stainless Fenderette
25-30-2000

Rub Rails
25-30-3000

Hand Rail
28-40-1620

Trident Step
28-10-5200

Bumper Step
Pull Out and Down
28-10-4710

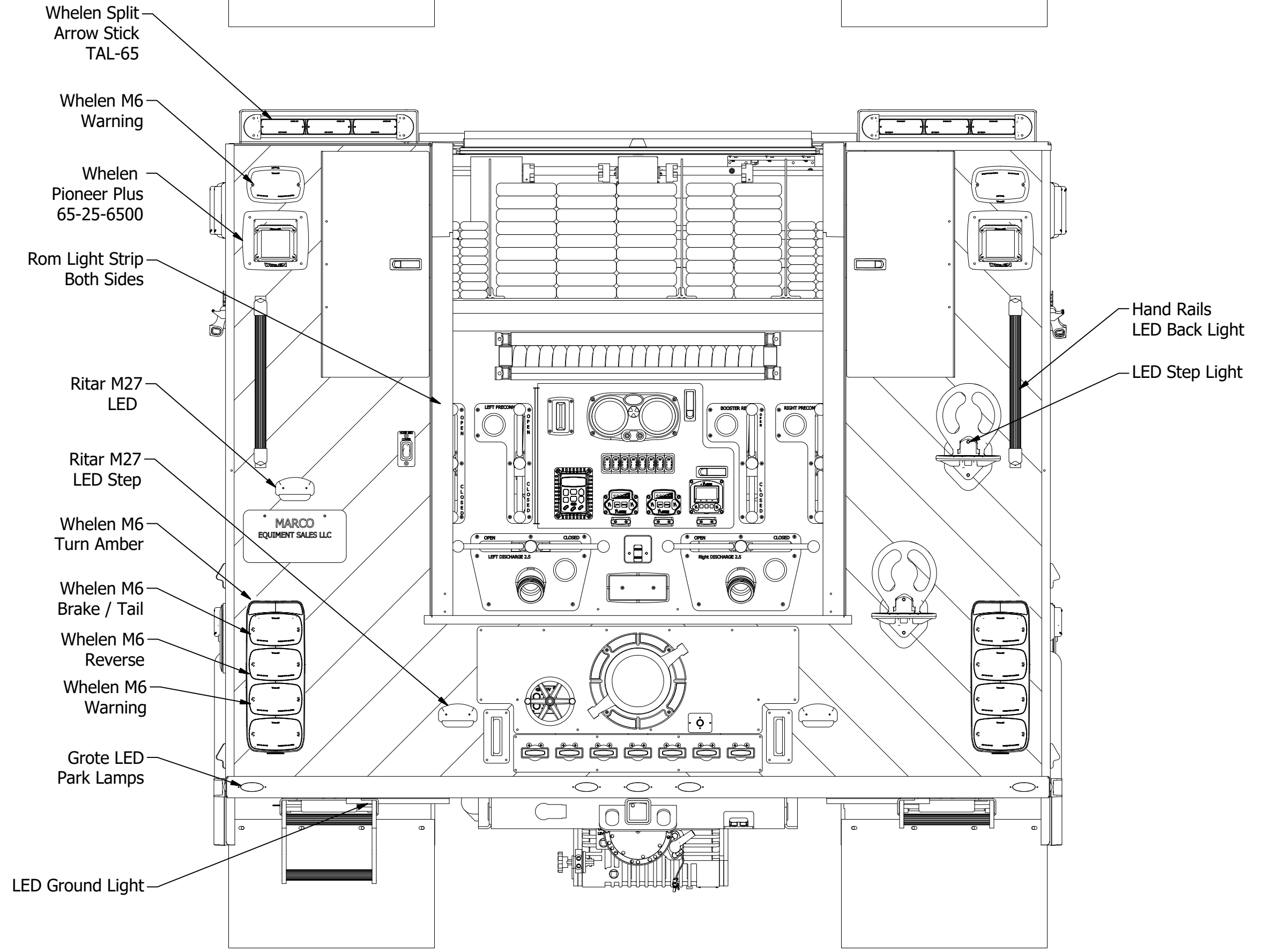
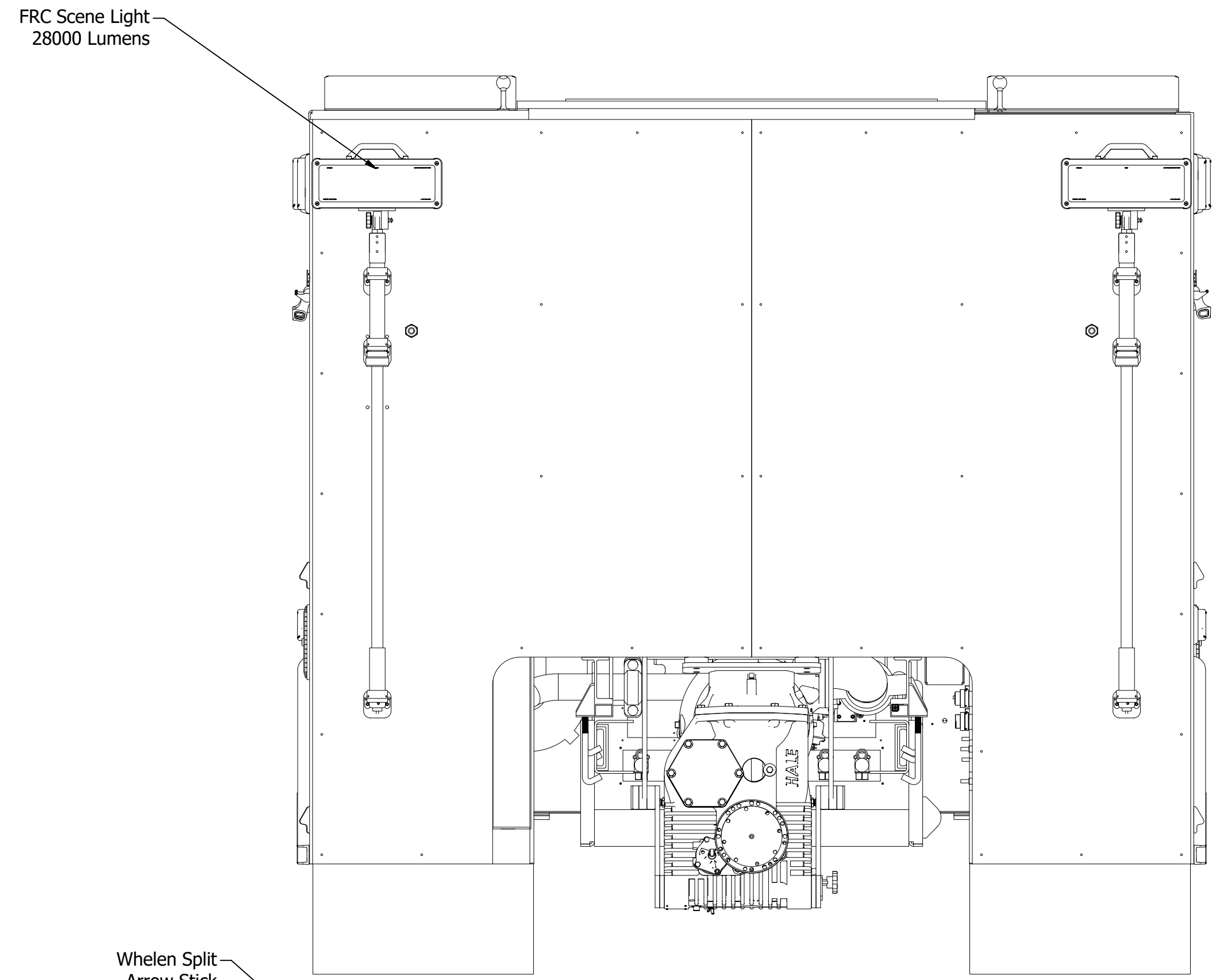
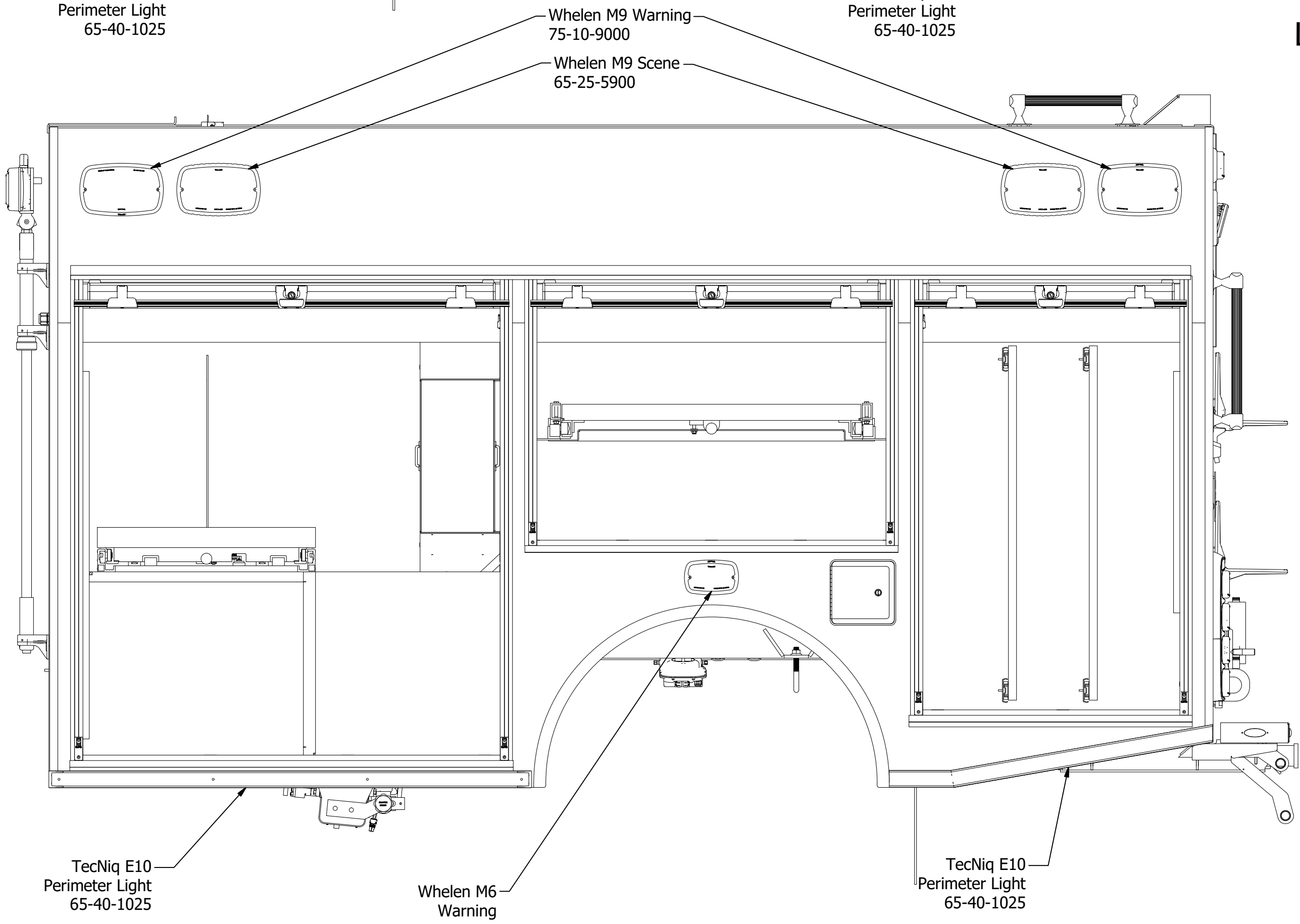
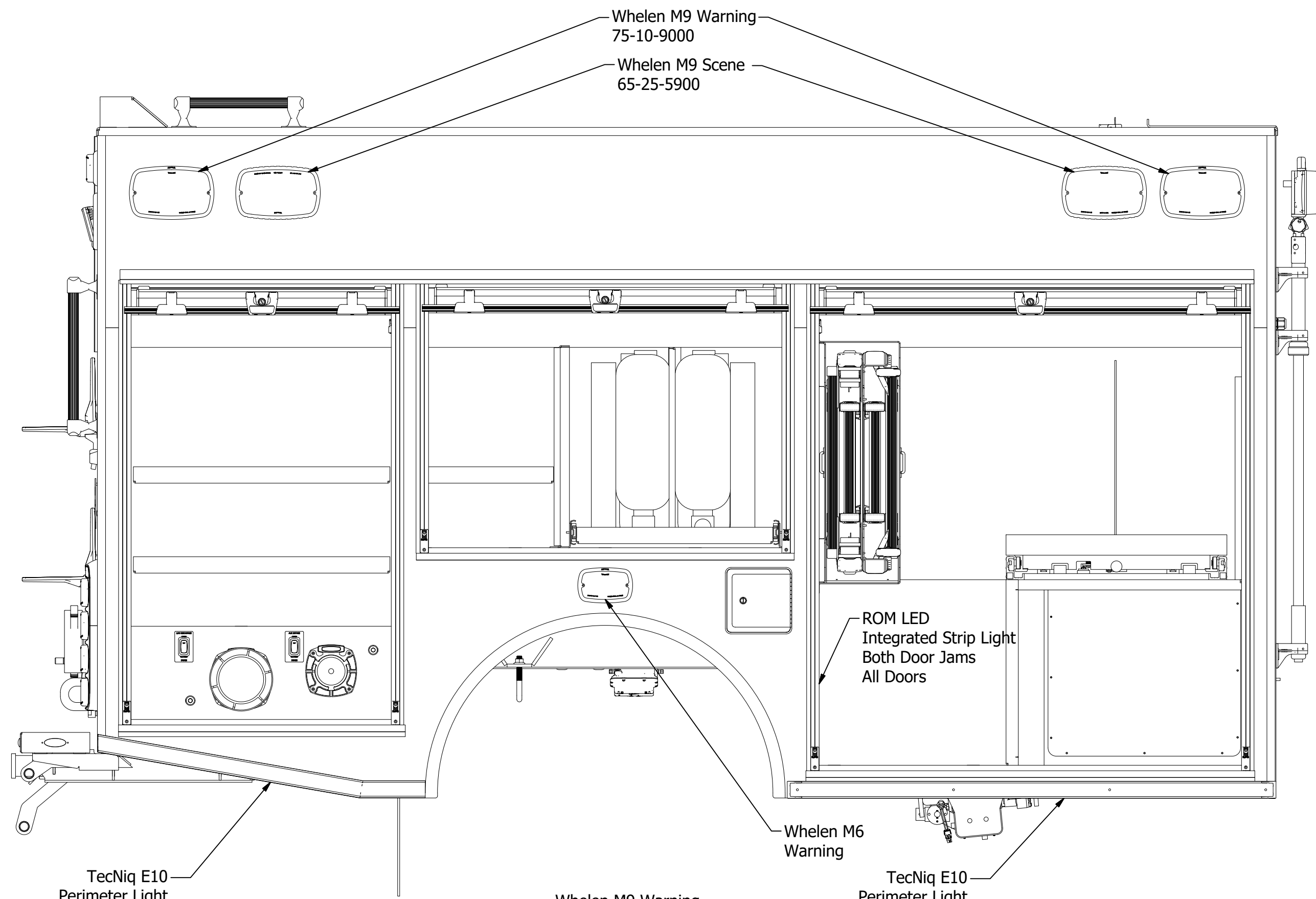
Reverse Camera

FIRE DEPARTMENT APPROVAL

REV	DATE	BY	DESCRIPTION
D			

DATE	5/18/2020	REVISED BY	FORD
DESCRIPTION	600 Attack	REVISED BY	Hobbie Fire Dept
QUANTITY	310	REVISED BY	Mini-Pumper
PRICE	1250	REVISED BY	Hobbie - Mini-Pumper - Equipment

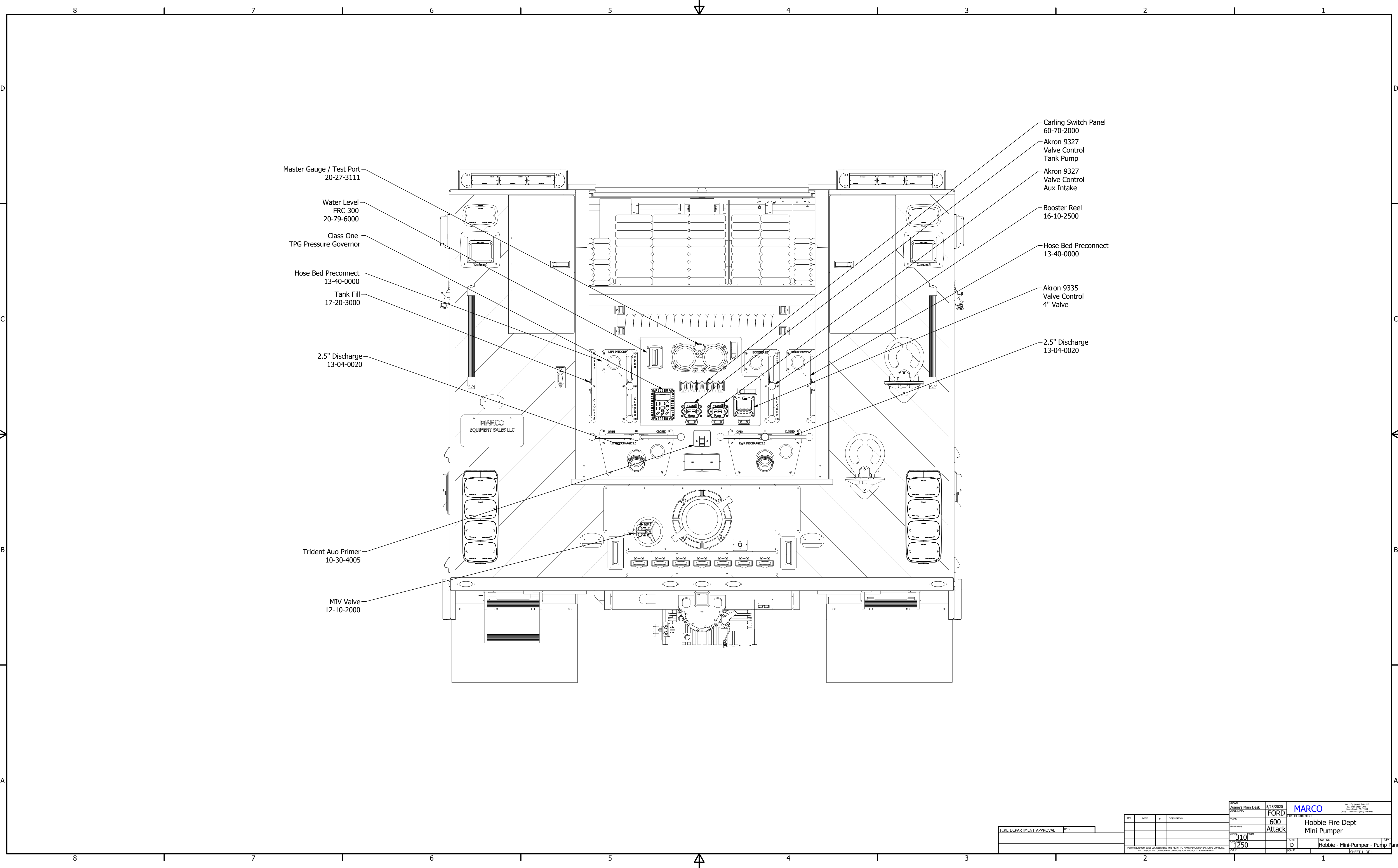
MARCO
EQUIPMENT SALES LLC
117 Franklin Ave. #200
Lynn, MA 01901
(617) 551-1100



Lighting

FIRE DEPARTMENT APPROVAL		DATE	BY	DESCRIPTION	REV	DATE	BY	DESCRIPTION
					1	5/18/2020		
				310				
				1250				

Equipment's Main Deck	5/18/2020	MARCO	Fire Department
FORD	600	Hobbie Fire Dept	
Attack		Mini Pumper	
SIZE	D	REV	
SCALE		DATE	5/18/2020
		Hobbie - Mini-Pumper - Lighting	
		SHEET 1 OF 1	



- Carling Switch Panel
60-70-2000
- Akron 9327
Valve Control
Tank Pump
- Akron 9327
Valve Control
Aux Intake
- Booster Reel
16-10-2500
- Hose Bed Preconnect
13-40-0000
- Akron 9335
Valve Control
4" Valve
- 2.5" Discharge
13-04-0020

- Master Gauge / Test Port
20-27-3111
- Water Level
FRC 300
20-79-6000
- Class One
TPG Pressure Governor
- Hose Bed Preconnect
13-40-0000
- Tank Fill
17-20-3000
- 2.5" Discharge
13-04-0020
- Trident Auto Primer
10-30-4005
- MIV Valve
12-10-2000

FIRE DEPARTMENT APPROVAL		DATE	REV	DESCRIPTION	REV	DATE	DESCRIPTION	REV	DATE	DESCRIPTION
				600	5/18/2020	FORD	600	5/18/2020	FORD	600
				310			Attack			
				1250						
				D			Hobbie - Mini-Pumper - Pump Panel			
				D			Hobbie - Mini-Pumper - Pump Panel			
				D			Hobbie - Mini-Pumper - Pump Panel			

MARCO
 EQUIPMENT SALES LLC
 11700 W. 10th Ave. Suite 100
 Denver, CO 80202
 (303) 751-1100

8

7

6

5

4

3

2

1

This weight analysis is the estimated weight of the truck with water and foam on board. This estimate does not include any loose equipment. The weight estimate does not include the hose load and ladders shown on the drawings. Since the equipment a fire dept may place on the apparatus varies from one department to another, it is the responsibility of the fire department to estimate the weight of the equipment to be placed on the apparatus.

Weight Calculations				
WEIGHT AND CENTER OF GRAVITY CALCULATIONS				12/6/2023 9:26:48 AM
VEHICLE:	Hobbie Attack			
	310 Gallons of Water, and Shelving, No Hose Load or Ladders			
WHEELBASE:	169.3	inches	TREAD (inches)	
CAB-TO-AXLE:	84	inches	FRONT:	76
CHASSIS GVWR	22000	pounds	REAR:	95.3
*** CHASSIS COMPONENTS ***				
COMPONENT	F-WEIGHT	R-WEIGHT	TOTAL WT	
Base chassis	4696	3200	7896	
			0	
			0	
			0	
TOTALS	4696	3200	7896	
	HOR CG:	68.61	inches	
*** ADDED COMPONENTS ***				
COMPONENT	HOR-CG	VERT-CG	LATERAL	WEIGHT
CHASSIS	60	35	0	7896
BJW Attack Body	167.3	0	0	10683
2 Personnel Front	61.2	0	0	550
3 Personal Rear	100	0	0	0
Center Console Front	59	0	0	100
Front Bumper Buck Stop	-37.61	0	0	0
Light Bar for roof	70			50
Front Super Singal Tires	0			0
Rear Super Single Tires	179.9			0
Skid Plates	100			0
Running Boards	70			75
Remove front tires	0			0
Remove Rear Tires and Wheels	179.9			0
Remove Front Center Seat	66			-54.6
Remove Front Bumper	-35.61			0
			TOTAL WEIGHT	19299
HORIZONTAL CENTER OF GRAVITY:		118	inches	
LATERAL CENTER OF GRAVITY:		0	inches	
FRONT AXLE (pounds):		2924	2924	5848
REAR AXLE (pounds):		6725	6726	13451
LOOSE EQUIPMENT PAYLOAD				2701
			FRONT AXLE	REAR AXLE
% OF EQUIPMENT AND PAYLOAD WEIGHT:			0.07	0.93
% OF TOTAL VEHICLE WEIGHT:			0.3	0.7

Loose Equipment Allowance Does Not Include Hose Load

FIRE DEPARTMENT APPROVAL DATE _____
 310
 1250
 MARCO
 Hobbie Fire Dept
 Mini Pumper
 J W Vol Fire Co - Mini-Pumper
 SHEET 1 OF 1